



Using the MicroBlaze Embedded Tools

Software, hardware, documentation and related materials:

Copyright © 2009 Altium Limited. All Rights Reserved.

The material provided with this notice is subject to various forms of national and international intellectual property protection, including but not limited to copyright protection. You have been granted a non-exclusive license to use such material for the purposes stated in the end-user license agreement governing its use. In no event shall you reverse engineer, decompile, duplicate, distribute, create derivative works from or in any way exploit the material licensed to you except as expressly permitted by the governing agreement. Failure to abide by such restrictions may result in severe civil and criminal penalties, including but not limited to fines and imprisonment. Provided, however, that you are permitted to make one archival copy of said materials for back up purposes only, which archival copy may be accessed and used only in the event that the original copy of the materials is inoperable. Altium, Altium Designer, Board Insight, DXP, Innovation Station, LiveDesign, NanoBoard, NanoTalk, OpenBus, P-CAD, SimCode, Situs, TASKING, and Topological Autorouting and their respective logos are trademarks or registered trademarks of Altium Limited or its subsidiaries. All other registered or unregistered trademarks referenced herein are the property of their respective owners and no trademark rights to the same are claimed. v8.0 31/3/08

Table of Contents

Getting Started with Embedded Software	1-1
1.1 Introduction	1-1
1.2 Embedded Software Tools	1-1
1.3 Creating an Embedded Project	1-4
1.3.1 Adding a new source file to the project	1-4
1.3.2 Adding an existing source file to the project	1-5
1.4 Setting the Embedded Project Options	1-5
1.4.1 Selecting a device	1-5
1.4.2 Setting the tool options	1-6
1.5 Building your Embedded Application	1-7
1.5.1 Compiling a single source file	1-7
1.5.2 Rebuilding your entire application	1-7
1.6 Debugging your Embedded Application	1-8
1.6.1 Setting breakpoints	1-8
1.6.2 Evaluating and watching expressions	1-8
1.6.3 Viewing output	1-9
1.6.4 Viewing memory	1-9
Using the C Compiler	2-1
2.1 Introduction	2-1
2.2 Compilation Process	2-1
2.3 Calling the Compiler	2-2
2.3.1 Overview of C Compiler Options	2-3
2.4 How the Compiler Searches Include Files	2-5
2.5 Compiling for Debugging	2-6
2.6 Compiler Optimizations	2-6
2.6.1 Generic optimizations (frontend)	2-7
2.6.2 Core specific optimizations (backend)	2-8
2.6.3 Optimize for Size or Speed	2-9
2.7 Static Code Analysis	2-11
2.7.1 C Code Checking: CERT C	2-12
2.7.2 C Code Checking: MISRA-C	2-13
2.8 C Compiler Error Messages	2-14
Using the C++ Compiler	3-1
3.1 Introduction	3-1
3.2 Calling the C++ Compiler	3-1
3.2.1 Overview of C++ Compiler Options	3-3
3.3 How the C++ Compiler Searches Include Files	3-4
3.4 C++ Compiler Error Messages	3-5
Profiling	4-1
4.1 What is profiling?	4-1
4.1.1 Three methods of profiling	4-1
4.2 Profiling using Code Instrumentation	4-2
4.2.1 Step 1: Build your Application for Profiling	4-2
4.2.1.1 Profiling Modules and Libraries	4-3
4.2.1.2 Linking Profiling Libraries	4-3
4.2.2 Step 2: Execute the Application	4-4
4.2.3 Step 3: Displaying Profiling Results	4-5

Using the Assembler	5-1
5.1 Introduction	5-1
5.2 Assembly Process	5-1
5.3 Calling the Assembler	5-2
5.3.1 Overview of Assembler Options	5-3
5.4 How the Assembler Searches Include Files	5-4
5.5 Assembler Optimizations	5-5
5.6 Generating a List File	5-5
5.7 Assembler Error Messages	5-6
Using the Linker	6-1
6.1 Introduction	6-1
6.2 Linking Process	6-1
6.2.1 Phase 1: Linking	6-2
6.2.2 Phase 2: Locating	6-3
6.3 Calling the Linker	6-4
6.3.1 Overview of Linker Options	6-5
6.4 Linking with Libraries	6-7
6.4.1 How the Linker Searches Libraries	6-8
6.4.2 How the Linker Extracts Objects from Libraries	6-9
6.5 Incremental Linking	6-9
6.6 Linking the C Startup Code	6-9
6.7 Importing Binary Files	6-10
6.8 Linker Optimizations	6-10
6.9 Controlling the Linker with a Script	6-11
6.9.1 Purpose of the Linker Script Language	6-11
6.9.2 Altium Designer and LSL	6-12
6.9.3 Structure of a Linker Script File	6-12
6.9.4 The Architecture Definition	6-14
6.9.5 The Derivative Definition	6-16
6.9.6 The Processor Definition: Using Multi-Processor Systems	6-17
6.9.7 The Memory Definition	6-17
6.9.8 The Section Layout Definition: Locating Sections	6-18
6.10 Linker Labels	6-20
6.11 Generating a Map File	6-22
6.12 Linker Error Messages	6-22
Using the Utilities	7-1
7.1 Introduction	7-1
7.2 Control Program	7-2
7.2.1 Calling the Control Program	7-2
7.2.2 Overview of Control Program Options	7-3
7.3 Make Utility	7-5
7.3.1 Calling the Make Utility	7-6
7.3.2 Overview of Make Utility Options	7-6
7.3.3 Writing a MakeFile	7-7
7.4 Librarian	7-13
7.4.1 Calling the Librarian	7-13
7.4.2 Overview of Librarian Options	7-13
7.4.3 Examples	7-14

Index

Manual Purpose and Structure

Windows Users

The documentation explains and describes how to use the TASKING MicroBlaze toolset to program a MicroBlaze processor.

You can use the tools either with the graphical Altium Designer or from the command line in a command prompt window.

Structure

The toolset documentation consists of a user's manual (this manual), which includes a Getting Started section, and a separate reference manual (*MicroBlaze Embedded Tools Reference*).

Start by reading the *Getting Started* in Chapter 1.

The other chapters explain how to use the compiler, assembler, linker and the various utilities.

Once you are familiar with these tools, you can use the reference manual to lookup specific options and details to make full use of the TASKING toolset.

The reference manual describes the C++ language implementation, the C language implementation and the assembly language.

Short Table of Contents

Chapter 1: Getting Started

Overview of the toolset and its individual elements. Explains step-by-step how to write, compile, assemble and debug your application. Teaches how you can use embedded projects to organize your files.

Chapter 2: Using the C Compiler

Describes how you can use the C compiler. An extensive overview of all options is included in the reference manual.

Chapter 3: Using the C++ Compiler

Describes how you can use the C++ compiler. An extensive overview of all options is included in the reference manual.

Chapter 4: Profiling

Describes the process of collecting statistical data about a running application.

Chapter 5: Using the Assembler

Describes how you can use the assembler. An extensive overview of all options is included in the reference manual.

Chapter 6: Using the Linker

Describes how you can use the linker. An extensive overview of all options is included in the reference manual.

Chapter 7: Using the Utilities

Describes several utilities and how you can use them to facilitate various tasks. The following utilities are included: control program, make utility and librarian.

Conventions Used in this Manual

Notation for syntax

The following notation is used to describe the syntax of command line input:

bold	Type this part of the syntax literally.
<i>italics</i>	Substitute the italic word by an instance. For example: <i>filename</i> Type the name of a file in place of the word <i>filename</i> .
{ }	Encloses a list from which you must choose an item.
[]	Encloses items that are optional. For example cmb [-?] Both cmb and cmb -? are valid commands.
	Separates items in a list. Read it as OR.
...	You can repeat the preceding item zero or more times.

Example

cmb [option]... *filename*

You can read this line as follows: enter the command **cmb** with or without an option, follow this by zero or more options and specify a *filename*. The following input lines are all valid:

```
cmb test.c
cmb -g test.c
cmb -g -s test.c
```

Not valid is:

```
cmb -g
```

According to the syntax description, you have to specify a filename.

Icons

The following illustrations are used in this manual:



Note: notes give you extra information.



Warning: read the information carefully. It prevents you from making serious mistakes or from losing information.



This illustration indicates actions you can perform with the mouse. Such as Altium Designer menu entries and dialogs.



Command line: type your input on the command line.



Reference: follow this reference to find related topics.

Related Publications

C Standards

- ISO/IEC 9899:1999(E), Programming languages – C [ISO/IEC]
More information on the standards can be found at <http://www.ansi.org>
- DSP-C, An Extension to ISO/IEC 9899:1999(E),
Programming languages – C [TASKING, TK0071-14]

C++ Standards

- The C++ Programming Language (second edition)
by Bjarne Strastrup (1991, Addison Wesley)
- ISO/IEC 14882:1998 C++ standard [ANSI]
More information on the standards can be found at <http://www.ansi.org>
- The Annotated C++ Reference Manual
by Margaret A. Ellis and Bjarne Strastrup (1990, Addison Wesley)

CERT C Secure Coding Standard

- The CERT C Secure Coding Standard
by Robert C. Seacord (October 2008, Addison Wesley)
- The CERT C Secure Coding Standard web site <http://www.securecoding.cert.org/>
For general information about CERT secure coding, see <http://www.cert.org/secure-coding>

MISRA-C

- Guidelines for the Use of the C Language in Vehicle Based Software [MIRA limited, 1998]
See also <http://www.misra.org.uk>
- MISRA-C:2004: Guidelines for the use of the C Language in critical systems [MIRA limited, 2004]
See also <http://www.misra-c.com>

TASKING Tools

- MicroBlaze Embedded Tools Reference
[Altium, TR0129]



1 Getting Started with Embedded Software

Summary

This tutorial shows how to create an embedded software project with Altium Designer.

1.1 Introduction

This tutorial presumes you are familiar with programming in C/assembly and have basic knowledge of embedded programming. It contains an overview of the TASKING tools available in Altium Designer. It describes how you can add, create and edit source files in an embedded project and how to build an embedded application. An embedded software project is normally used as a subproject for an FPGA project and once they are built, they are downloaded and executed inside an FPGA device.

The example used in this tutorial is a Hello World program in C. Other examples are supplied in the \Examples\Software Designs\Processor Examples folder relative to the installation path.

1.2 Embedded Software Tools

With the TASKING embedded software tools in Altium Designer you can write, compile, assemble and link applications for several targets, such as the TSK51x/TSK52x, TSK80x, TSK165x, PowerPC, TSK3000, MicroBlaze, Nios II and ARM. Figure 1-1 shows all components of the TASKING toolset with their input and output files.

The C compiler, assembler, linker and debugger are target dependent, whereas the librarian is target independent. The **bold** names in the figure are the executable names of the tools. Substitute **target** with one of the supported target names, for example, **c3000** is the TSK3000 C compiler, **cppc** is the PowerPC C compiler, etc.

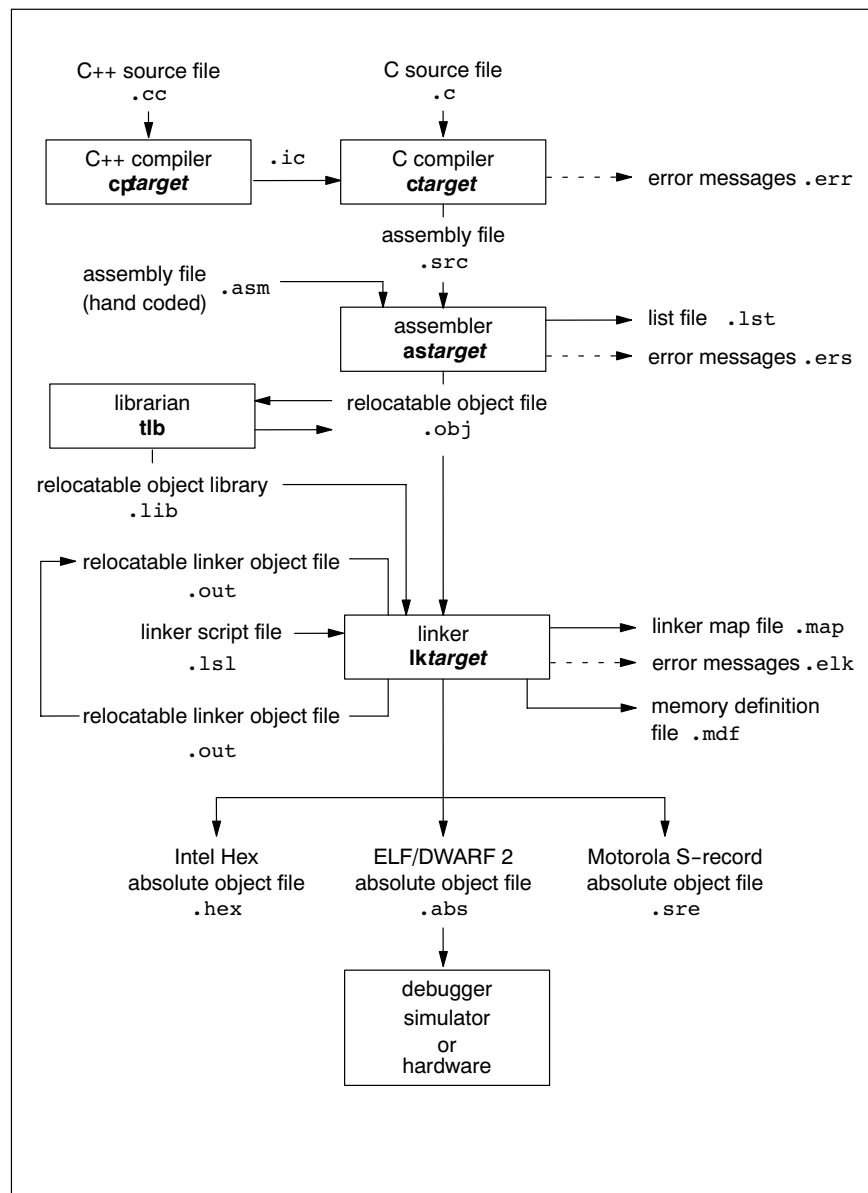


Figure 1-1: Toolset overview

The following table lists the file types used by the TASKING toolset.

Extension	Description
Source files	
.cc .cpp .cxx	C++ source files, input for the C++ compiler
.c .ic	C source files, input for the C compiler
.asm	Assembler source file, hand coded
.lsl	Linker script file
Generated source files	
.src	Assembler source file, generated by the C compiler, does not contain macros
Object files	
.obj	ELF/DWARF 2 relocatable object file, generated by the assembler
.lib	Archive with ELF/DWARF 2 object files
.out	Relocatable linker output file
.abs	ELF/DWARF 2 absolute object file, generated by the locating part of the linker
.hex	Absolute Intel Hex object file
.sre	Absolute Motorola S-record object file
List files	
.lst	Assembler list file
.map	Linker map file
.mcr	MISRA-C report file
.mdf	Memory definition file
Error list files	
.err	Compiler error messages file
.ers	Assembler error messages file
.elk	Linker error messages file

Table 1-1: File extensions

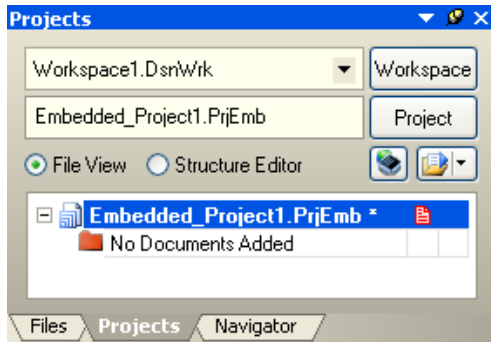
1.3 Creating an Embedded Project

To start working with Altium Designer, you first need a project. A project makes managing your source documents and any generated outputs much easier. For embedded software, you need to create an Embedded Software project.

To create a new Embedded Software project:

1. Select **File » New » Project » Embedded Project** from the menu, or click on **Blank Project (Embedded)** in the **New** section of the **Files** panel. If this panel is not displayed, click on the **Files** tab at the bottom of the Design Manager panel.

The **Projects** panel displays a new project file, `Embedded_Project1.PrjEmb`.



2. Rename the new project file (with a `.PrjEmb` extension) by selecting **File » Save Project As**.

Navigate to the location where you want to save your project, type the name `GettingStarted.PrjEmb` in the **File name** field and click on **Save**.

1.3.1 Adding a new source file to the project

If you want to add a new source file (C or assembly or text file) to your project, proceed as follows:

1. In the **Projects** panel, right-click on `GettingStarted.PrjEmb` and select **Add New to Project » C File**.

A new C source file, `Source1.C`, is added to the Embedded Software project under the folder named *Source Documents* in the **Projects** panel. The Text Editor opens ready for your input.



For a new assembly file select **Assembly File** instead of **C File** and for a new text file select **Text Document**.

2. Enter the source code required. For this tutorial enter the following code:

```
#include <stdio.h>

void printloop(void)
{
    int loop;

    for (loop=0; loop<10; loop++)
    {
        printf("%i\n", loop);
    }
}

void main(void)
{
    printf("Hello World!\n");

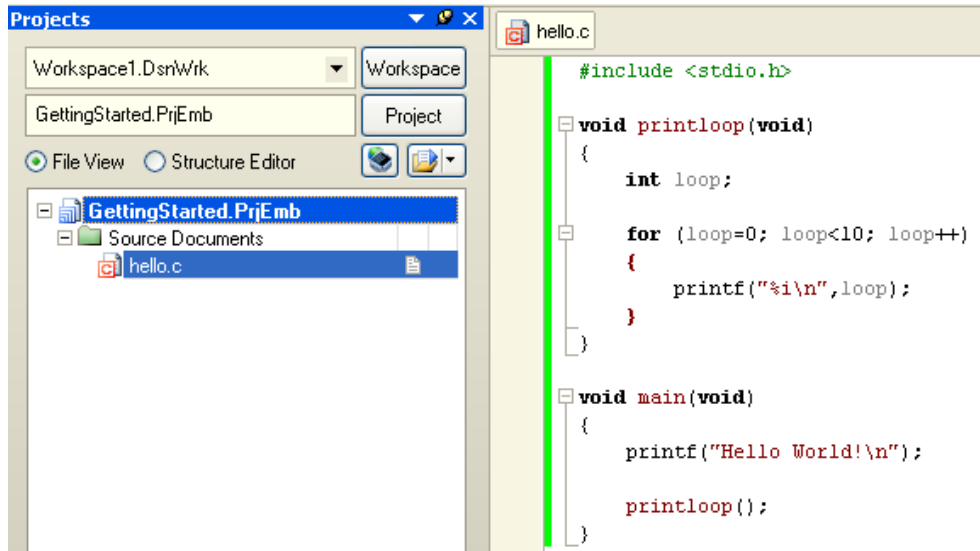
    printloop();
}
```

3. Save the source file by selecting **File » Save As**.

Navigate to the location where you want to store the source, type the name `hello.c` in the **File name** field and click on **Save**.

4. Save your project by right-clicking on `GettingStarted.PrjEmb` in the **Projects** panel and select **Save Project**.

Your project now looks like:



1.3.2 Adding an existing source file to the project

If you want to add an existing source file to your project, proceed as follows:

1. In the **Projects** panel, right-click on `GettingStarted.PrjEmb` and select **Add Existing to Project**.

The *Choose Documents to Add to Project* dialog appears.

2. Navigate to the file you want to add to your project and click **Open**.

The source file is added to the project and listed in the **Projects** panel.

To edit or view the recently added file in the Text Editor:

3. Double-click on the filename.

Save your project:

4. In the **Projects** panel, right-click on `GettingStarted.PrjEmb` and select **Save Project**.

1.4 Setting the Embedded Project Options

An embedded project in Altium Designer has a set of embedded options associated with it. After you have added files to your project, and have written your application (`hello.c` in our example), the next steps in the process of building your embedded application are:

- selecting a device (resulting in an associated toolset)
- specifying the options of the tools in the toolset, such as the C compiler, assembler and linker options. (Different toolset configurations may have different sets of options.)

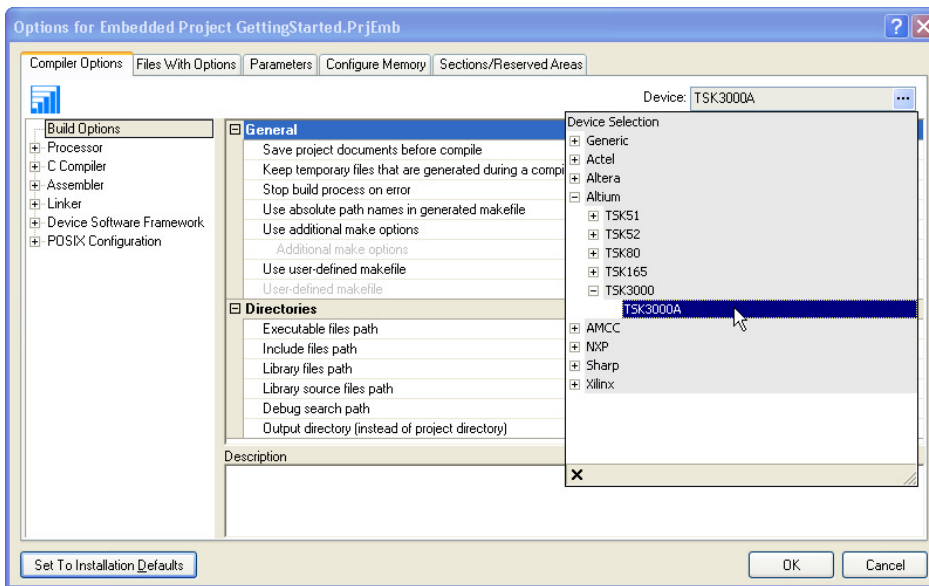
1.4.1 Selecting a device

For an embedded project, you must specify the device for which you want to build your embedded project first:

1. In the **Projects** panel, right-click on `GettingStarted.PrjEmb` and select **Project Options**.

Alternatively: select **Project » Project Options**.

The Options for Embedded Project dialog appears.



2. In the **Compiler Options** tab, select the **Device**. You can make a selection based on manufacturer, or you can select a generic device. If you select a device from a manufacturer, the correct processor type is selected automatically. If you select a generic device, you have to specify the target processor type manually.

To specify the target processor type manually (only for a Generic device):

3. In the left pane, expand the **Processor** entry and select **Processor Definition**.
4. In the right pane, expand the **General** entry and set **Select processor** to the correct target processor.
5. Click **OK** to accept the new device.

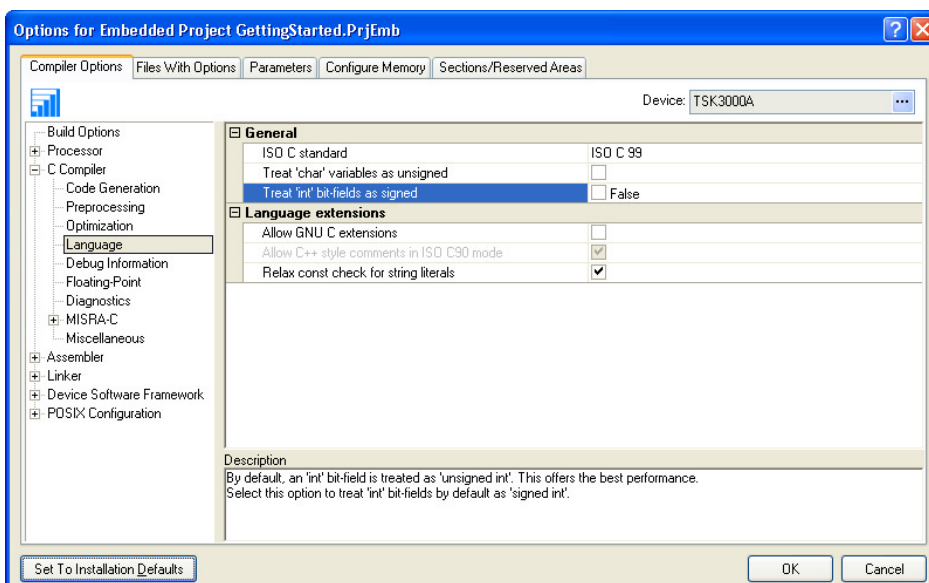
1.4.2 Setting the tool options

You can set embedded options commonly for all files in the project and you can set file specific options.

Setting project wide options

1. In the **Projects** panel, right-click on `GettingStarted.PrjEmb` and select **Project Options**.
Alternatively: select **Project** » **Project Options**.

The Options for Embedded Project dialog appears.



2. In the left pane, expand the **C Compiler** entry.
This entry contains several pages where you can specify C compiler settings.
3. In the right pane, set the options to the values you want. Do this for all pages.
4. Repeat steps 2 and 3 for the other tools like assembler and linker.
5. Click **OK** to confirm the new settings.

Based on the embedded project options, Altium Designer creates a so-called *makefile* which it uses to build your embedded application.



On the **Miscellaneous** page of each tool entry, the **Command line options** field shows how your settings are translated to command line options.

Setting options for an individual document

1. In the **Projects** panel, right-click on `hello.c` and select **Document Options**.
Alternatively: select **Project » Document Options**.

The Options for Document dialog appears.

Steps 2 to 5 are the same as the steps for setting project wide options. The **Files With Options** tab in the *Options for Embedded Project* dialog shows which files have deviating settings. If you right-click on a file in this tab, a menu provides you with functions to copy options quickly from and to other individual files.

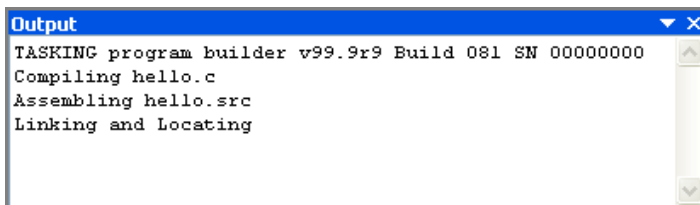
1.5 Building your Embedded Application

You are now ready to build your embedded application.

1. Select **Project » Compile Embedded Project GettingStarted.PrjEmb** or click on the  button.

The TASKING program builder compiles, assembles, links and locates the files in the embedded project that are out-of-date or that have been changed during a previous build. The resulting file is the absolute object file `GettingStarted.abs` in the ELF/DWARF format.

2. You can view the results of the build in the Output panel (**View » Workspace Panels » System » Output**).



1.5.1 Compiling a single source file

If you want to compile a single source file:

1. Right-click on the file (`hello.c`) you want to compile and select **Compile Document hello.c**. Alternatively, you can open a file in the Text Editor and select **Project » Compile Document hello.c**.
2. Open the Messages panel to view any errors that may have occurred during compilation by selecting **View » Workspace Panels » System » Messages**, or selecting **System » Messages** from the **Panels** tab.
3. Correct any errors in your source files. Save your project files.

1.5.2 Rebuilding your entire application

If you want to build your embedded application from scratch, regardless of their date/time stamp, you can perform a recompile:

1. Select **Project » Recompile Embedded Project GettingStarted.PrjEmb**.
2. The TASKING program builder compiles, assembles, links and locates all files in the embedded project unconditionally.

You can now debug the resulting absolute object file `GettingStarted.abs`.

1.6 Debugging your Embedded Application

When you have built your embedded application, you can start debugging the resulted absolute object file with the simulator.

To start debugging, you have to execute one or more source lines:

- Select one of the source level or instruction level step options (**Debug » Step Into, Step Over**) to step through your source or select **Debug » Run** to run the simulation.

A blue line indicates the current execution position.

To view more information about items such as registers, locals, memory or breakpoints, open the various workspace panels:

- Select **View » Workspace Panels » Embedded » (a_panel)**.

To end a debug session:

- Select **Debug » Stop Debugging**.

1.6.1 Setting breakpoints

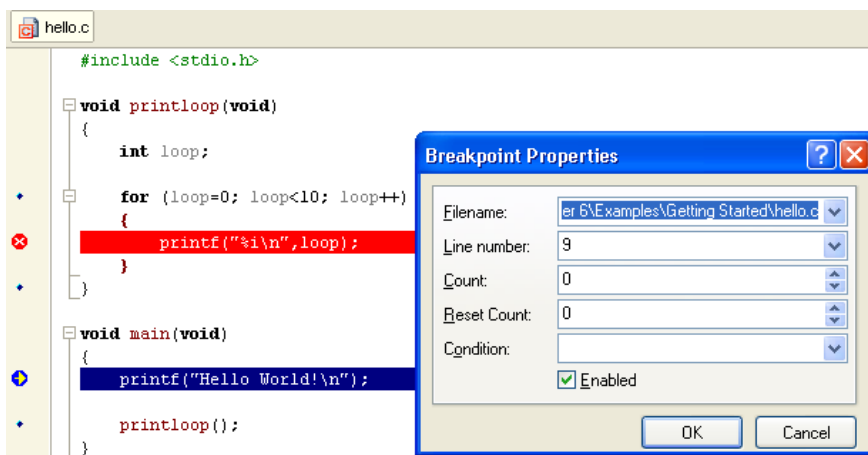
You can set breakpoints when the embedded source file is opened. Small blue points indicate where you can set breakpoints:

- Click on the left margin next to the source line to toggle a breakpoint on and off.

A red crossed circle and red line mark the breakpoint.

To change the breakpoint's properties:

- To change the breakpoint, right-click on the breakpoint and select **Breakpoint Properties...**



To disable or enable a breakpoint:

- Right-click on the breakpoint and select **Disable Breakpoint** (or **Enable Breakpoint** when it was disabled)

A disabled breakpoint is marked with green color.

The breakpoint panel gives an overview of all (disabled) breakpoint and their properties:

- Select **View » Workspace Panels » Embedded » Breakpoints**.

1.6.2 Evaluating and watching expressions

While debugging, you can examine the value of expressions in the **Evaluate** panel.

1. Open the **Evaluate** panel by selecting **View » Workspace Panels » Embedded » Evaluate**.
2. In the edit field enter the expression you want to evaluate and click **Evaluate**.

*The expression and its value appear below in the **Evaluate** panel. Click on the **Evaluate** button every time the variable in the code is modified.*

To watch an expression continuously, you can set a *watch*:

3. Select **Add Watch**

*The new expression and its value appear in the **Watches** panel. The values in the **Watches** panel are updated continuously when the code is executing.*

*Alternatively: Select **Debug » Add Watch**; enter an expression and click **OK**.*



The way an expression is evaluated, depends strongly on the amount of debug information in the object file. Also the optimization level influences the ease of debugging.

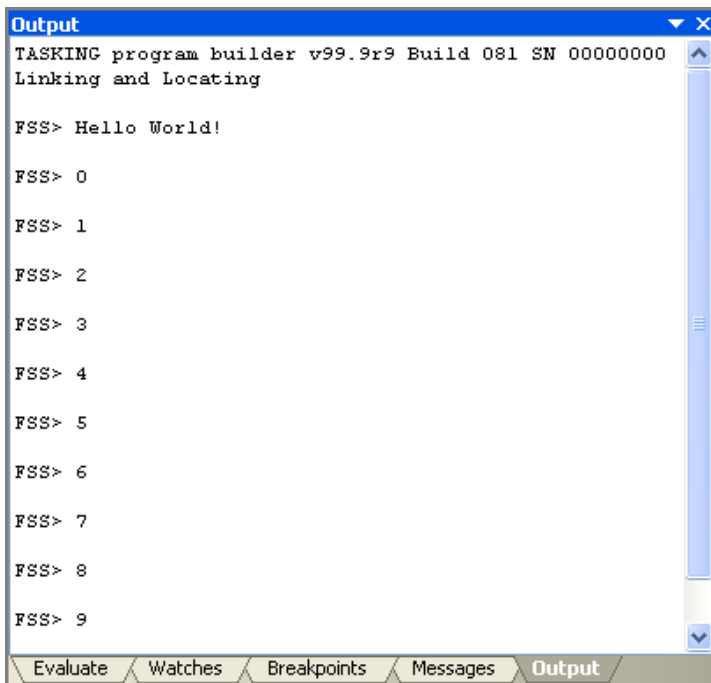
1.6.3 Viewing output

It is possible to view the output generated by your embedded application. Remember, you must be in debugging mode.

To open the Output panel:

- Select **View » Workspace Panels » System » Output**.

The Output panel opens showing the output of the embedded application.



1.6.4 Viewing memory

It is possible to view the contents of the memory. You can open several memory windows. Remember, you must be in debugging mode. The type of memory windows you can open, depends on the selected target processor.

To open for example the Main memory window:

1. Select **View » Workspace Panels » Embedded » Main**.

The Main memory window opens showing the contents of the memory.

Address	0	1	2	3	4	5	6	7	8	9	A	B	C	D	E	F	Data
0000 0000	24	21	01	00	40	81	38	00	40	01	00	00	34	21	00	00	\$!..@08..@...4!..
0000 0010	40	81	00	00	3C	01	01	01	24	3D	82	80	3C	01	01	01	@0...<...\$=,6<...
0000 0020	24	3C	80	00	3C	04	00	00	24	84	16	8C	8C	88	00	00	\$<@.<...\$,,.8E*...
0000 0030	8C	89	00	04	8C	8A	00	08	8C	8B	00	0C	34	05	00	01	8E...8S...8<...4...
0000 0040	10	A8	00	06	24	84	00	10	34	05	00	02	10	A8	00	0B	...\$///.4...."
0000 0050	00	00	00	00	08	00	00	25	00	00	00	00	81	45	00	00%.....0E..
0000 0060	A1	25	00	00	25	6B	FF	FF	25	4A	00	01	1D	60	FF	FB	;*...%ky%*J...`yû
0000 0070	25	29	00	01	08	00	00	0B	00	00	00	00	A1	20	00	00	%)........; ..
0000 0080	25	6B	FF	FF	1D	60	FF	FD	25	29	00	01	08	00	00	0B	%ky%.`y%*).....
0000 0090	00	00	00	00	3C	04	00	00	0C	00	00	63	3C	05	00	00	...<.....c<...
0000 00A0	08	00	00	A3	00	40	20	25	01	00	00	CC	01	00	00	CC	...E.@ %...I...I
0000 00B0	00	00	00	00	00	00	00	50	00	09	00	00	01	00	01	1CP.....
0000 00C0	01	00	01	1C	00	00	00	00	00	00	00	50	00	0A	01	00P....
0000 00D0	00	00	00	00	00	00	00	00	00	00	00	00	FF	FF	FF	FFyyyy

- In the edit field you can specify the address you want to start viewing from.

Summary

This chapter describes the compilation process and explains how to call the compiler.

2.1 Introduction

Altium Designer uses a *makefile* to build your entire embedded project, from C source till the final ELF/DWARF 2 object file which serves as input for the debugger.

Although in Altium Designer you cannot run the compiler separately from the other tools, this section discusses the options that you can specify for the compiler.

On the command line it is possible to call the compiler separately from the other tools. However, it is recommended to use the control program for command line invocations of the toolset (see section 7.2, *Control Program*, in Chapter *Using the Utilities*). With the control program it is possible to call the entire toolset with only one command line.

The compiler takes the following files for input and output:

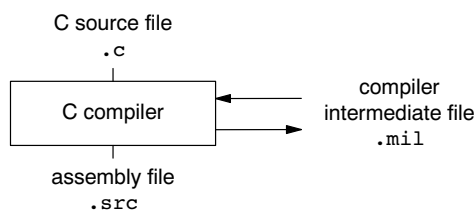


Figure 2-1: C compiler

This chapter first describes the compilation process which consists of a *frontend* and a *backend* part. Next it is described how to call the C compiler and how to use its options. An extensive list of all options and their descriptions is included in the reference manual. Finally, a few important basic tasks are described, such as performing various optimizations.

2.2 Compilation Process

During the compilation of a C program, the compiler **ctarget** runs through a number of phases that are divided into two groups: *frontend* and *backend*.

The backend part is not called for each C statement, but starts after a complete C module or set of modules has been processed by the frontend (in memory). This allows better optimization.

The compiler requires only one pass over the input file which results in relative fast compilation.

Frontend phases

1. The preprocessor phase:

The preprocessor includes files and substitutes macros by C source. It uses only string manipulations on the C source. The syntax for the preprocessor is independent of the C syntax but is also described in the ISO/IEC 9899:1999(E) standard.

2. The scanner phase:

The scanner converts the preprocessor output to a stream of tokens.

3. The parser phase:

The tokens are fed to a parser for the C grammar. The parser performs a syntactic and semantic analysis of the program, and generates an intermediate representation of the program. This code is called MIL (Medium level Intermediate Language).

4. The frontend optimization phase:

Target processor *independent* optimizations are performed by transforming the intermediate code.

Backend phases

1. Instruction selector phase:

This phase reads the MIL input and translates it into Low level Intermediate Language (LIL). The LIL objects correspond to a processor instruction, with an opcode, operands and information used within the compiler.

2. Peephole optimizer/instruction scheduler/software pipelining phase:

This phase replaces instruction sequences by equivalent but faster and/or shorter sequences, rearranges instructions and deletes unnecessary instructions.

3. Register allocator phase:

This phase chooses a physical register to use for each virtual register.

4. The backend optimization phase:

Performs target processor *independent* and *dependent* optimizations which operate on the Low level Intermediate Language.

5. The code generation/formatter phase:

This phase reads through the LIL operations to generate assembly language output.

2.3 Calling the Compiler

Altium Designer uses a *makefile* to build your entire project. This means that you cannot run the compiler separately. If you compile a single C source file from within Altium Designer, the file is also assembled. However, you can set options specific for the compiler. After you have built your project, the output files of the compilation step are available in your project directory, unless you specified an alternative output directory in the **Build Options** page of the *Project Options* dialog.

To compile and assemble your program

Click either one of the following buttons:



(Compile Active Document)

Compiles and assembles the currently selected file. This results in a relocatable object file (.obj).



(Compile Active Project)

Builds your entire project but only updates files that are out-of-date or have been changed since the last build, which saves time.

Or select **Recompile Embedded Project** from the **Projects** menu.

Builds your entire project unconditionally. All steps necessary to obtain the final .abs file are performed.

Select the right toolset

First make sure you have selected the correct toolset for your target.

1. From the **Project** menu, select **Project Options...**

The Project Options dialog box appears.

2. Select the correct **Device**.

Select a target processor (core)

If you have selected a toolset that supports several processor cores, by means of a Generic device, you need to choose a processor type first.

To access the processor options:

1. From the **Project** menu, select **Project Options...**

The Project Options dialog box appears.

2. Expand the **Processor** entry and select **Processor Definition**.
3. In the **Select Processor** box select a processor type.

Processor options affect the invocation of all tools in the toolset. In Altium Designer you only need to set them once.

Based on the target processor, the compiler includes a *special function register file*. This is a regular include file which enables you to use virtual registers that are located in memory.

To access the compiler options

1. From the **Project** menu, select **Project Options...**

The Project Options dialog box appears.

2. Expand the **C Compiler** entry.
3. Select the sub-entries and set the options in the various pages.

The command line variant is shown simultaneously.

Invocation syntax on the command line (Windows Command Prompt)

The invocation syntax on the command line is:

```
ctarget [ [option]... [file]... ]...
```

The input *file* must be a C source file (.c or .ic). *ctarget* can be one of the supported C compilers. For example, **cmb** (for the MicroBlaze).

Example:

```
cmb test.c
```

This compiles the file `test.c` and generates the file `test.src` which serves as input for the assembler.

2.3.1 Overview of C Compiler Options

You can set the following C compiler options in Altium Designer.

Menu entry	Command line
Build Options	
Include files path	<code>-ldir</code>
Processor » Processor Definition	
Barrel shifter present	<code>--use-hardware=b</code>
Divide unit present	<code>--use-hardware=d</code>
Multiply unit present	<code>--use-hardware=m</code>
Floating-point unit present	<code>--use-hardware=f</code>
MSRSET and MSRCLR instructions present	<code>--use-hardware=s</code>
PCMPBF, PCMPEQ and PCMPNE instructions present	<code>--use-hardware=p</code>
C Compiler » Code Generation	
Put strings in ROM only	<code>--romstrings</code>
Alignment of composite types	<code>--align-composites=[n o]</code>

Menu entry	Command line
Generate code for interrupt vector	<i>no option</i> --novector
Reset/interrupt vector offset	--vector-offset=address
Generate frame for interrupt handler	<i>no option</i> --noframe
Enable allocation in sdata	--sdata=size
Allocation in sdata for objects smaller than threshold	
Assume external data objects will also be placed in sdata	--extern-sdata
C Compiler » Preprocessing	
User macro	-Dmacro[=value]
Include this file before source	-Hfile
Store the C Compiler preprocess output (<i>file.pre</i>)	-E
C Compiler » Optimization	
Optimization level	-O[0 1 2 3]
Size / speed trade-off (default: size)	-t{0 4}
Always inline function calls	--inline
Maximum code size increase caused by inlining	--inline-max-incr=value
Maximum size for functions to always inline	--inline-max-size=value
C Compiler » Language	
ISO C standard: C 90 or C 99 (default: 99)	-c{90 99}
Treat 'char' variables as unsigned	-u
Treat 'int' bit-fields as signed	--signed-bitfields
Treat enumerated types always as integer	--integer-enumeration
<i>Language extensions:</i>	--language=flags
Allow GNU C extensions	--language=+gcc
Allow C++ style comments in ISO C90 mode	--language=+comments
Check assignment of string literal to non-const string pointer	--language=-strings
Allow optimization across volatile access	--language=-volatile
C Compiler » Debug Information	
Generate symbolic debug information	-g
Generate profiling information	-p[flags]
Run-time checks	-r[flags]
C Compiler » Floating-Point	
Use single precision floating-point only	-F
C Compiler » Diagnostics	
Error reporting	<i>no option</i> -w
Report all warnings	-w
Suppress all warnings	-wnum[,num]...
Suppress specific warnings	
Treat warnings as errors	--warnings-as-errors[=n,...]
C Compiler » MISRA-C	
MISRA-C checking	--misrac={all nr[-nr] ,...}
MISRA-C version	--misrac-version={1998 2004}
Produce a MISRA-C report	<i>n.a</i>
Turn advisory rule violation into warning	--misrac-advisory-warnings
Turn required rule violation into warning	--misrac-required-warnings
C Compiler » CERT C Secure Code Checking	
CERT C secure code checking	--cert={all name[-name],...}

Menu entry	Command line
C Compiler » Miscellaneous	
Merge C source code with assembly in output file (.src)	-s
Additional C compiler options	<i>options</i>

Table 2-1: C Compiler options in Altium Designer

The following C compiler options are only available on the command line:

Description	Command line
Display invocation syntax	--help [= <i>item</i> ,...]
Check source (check syntax without generating code)	--check
Maximum size of a match with code compaction (default: 200)	--compact-max-size = <i>value</i>
Also generate dependencies for make	--dep-file =[<i>file</i>]
Show description of diagnostic(s)	--diag =[<i>fmt</i> :]{ all <i>nr</i> ,...}
Redirect diagnostic messages to a file	--error-file =[<i>file</i>]
Read options from <i>file</i>	-f <i>file</i>
Keep output file after errors	-k
Maximum call depth, default infinite (-1)	--max-call-depth = <i>value</i>
Specify target name for -Em/--dep-file output	--make-target = <i>name</i>
Generate intermediate MIL file	--mil
Generate intermediate MIL file, also split output into .ms files	--mil-split =[<i>file</i> ,...]
Send output to standard output	-n
Do not clear non-initialized global variables	--noclear
Skip the standard include files directory	--no-stdinc
Specify name of output file	-o <i>file</i>
Rename default section name	-R [<i>name</i>]={ <i>suffix</i> -f -m -fm }
Treat external definitions as "static"	--static
Remove preprocessor <i>macro</i>	-U <i>macro</i>
Display version header only	-V

Table 2-2: Additional C Compiler options



For a complete overview of all options with extensive description, see section 5.1, [C Compiler Options](#), of Chapter *Tool Options* of the reference manual.

2.4 How the Compiler Searches Include Files

When you use include files (with the `#include` statement), you can specify their location in several ways. The compiler searches the specified locations in the following order:

1. If the `#include` statement contains an absolute pathname, the compiler looks for this file. If no path or a relative path is specified, the compiler looks in the same directory as the source file. This is only possible for include files that are enclosed in `""`.



This first step is not done for include files enclosed in `<>`.

2. When the compiler did not find the include file, it looks in the directories that are specified in the **Build Options** tab of the *Project Options* dialog (equivalent to the **-I** command line option).

3. When the compiler did not find the include file (because it is not in the specified include directory or because no directory is specified), it looks in the path(s) specified in the environment variable `CtargetINC` (for example, `CMBINC` for the MicroBlaze).
4. When the compiler still did not find the include file, it finally tries the default `include` directory relative to the installation directory.

Example

Suppose that the C source file `test.c` contains the following lines:

```
#include <stdio.h>
#include "myinc.h"
```

You can call the compiler as follows:

```
ctarget -Imyinclude test.c
```

First the compiler looks for the file `stdio.h` in the directory `myinclude` relative to the current directory. If it was not found, the compiler searches in the environment variable and then in the default `include` directory.

The compiler now looks for the file `myinc.h`, in the directory where `test.c` is located. If the file is not there the compiler searches in the directory `myinclude`. If it was still not found, the compiler searches in the environment variable and then in the default `include` directory.

2.5 Compiling for Debugging

Compiling your files is the first step to get your application ready to run on a target. However, during development of your application you first may want to debug your application.

To create an object file that can be used for debugging, you must instruct the compiler to include *symbolic debug information* in the source file.

To include symbolic debug information

1. From the **Project** menu, select **Project Options...**
The Project Options dialog box appears.
2. Expand the **C Compiler** entry and select **Debug Information**.
3. Enable the option **Generate symbolic debug information**.

Debug and optimizations

Due to different compiler optimizations, it might be possible that certain debug information is optimized away. Therefore, if you encounter strange behavior during debugging it might be necessary to reduce the optimization level, so that the source code is still suitable for debugging. For more information about optimization see section 2.6, [Compiler Optimizations](#).

Invocation syntax on the command line (Windows Command Prompt)

The invocation syntax on the command line is:

```
ctarget -g -O1 file...
```

2.6 Compiler Optimizations

The compiler has a number of optimizations which you can enable or disable.

1. From the **Project** menu, select **Project Options...**
The Project Options dialog appears.
2. Expand the **C Compiler** entry and select **Optimization**.
3. Select an optimization level in the **Optimization level** box.

Or:

In the **Optimization level** box select **Custom optimization** and enable the optimizations you want in the **Custom optimization** box.

- **Level 0 – No optimization:** No optimizations are performed except for the coalescer (to allow better debug information). The compiler tries to achieve a 1-to-1 resemblance between source code and produced code. Expressions are evaluated in the order written in the source code, associative and commutative properties are not used.
- **Level 1 – Few optimizations:** Enables optimizations that do not affect the debug-ability of the source code. Use this level when you encounter problems during debugging your source code with optimization level 2.
- **Level 2 – Medium optimization (default):** Enables more optimizations to reduce the memory footprint and/or execution time. This is the default optimization level.
- **Level 3 – Full optimization:** This is the highest optimization level. Use this level when your program does not fit in the memory provided by your system anymore, or when your program/hardware has become too slow to meet your real-time requirements.
- **Custom optimization:** you can enable/disable specific optimizations.

Optimization pragmas

If you specify a certain optimization, all code in the module is subject to that optimization. Within the C source file you can overrule the compiler options for optimizations with `#pragma optimize flag` and `#pragma endoptimize`. Nesting is allowed:

```
#pragma optimize e      /* Enable expression
...                    simplification          */
... C source ...
...
#pragma optimize c      /* Enable common expression
...                    elimination. Expression
... C source ...        simplification still enabled */
...
#pragma endoptimize     /* Disable common expression
...                    elimination          */
#pragma endoptimize     /* Disable expression
...                    simplification        */
```

The compiler optimizes the code between the pragma pair as specified.

You can enable or disable the optimizations described below. The command line option for each optimization is given in brackets.



See also [C compiler option `--optimize \(-O\)`](#) in section 5.1, *C Compiler Options*, of Chapter *Tool Options* of the reference manual.

2.6.1 Generic optimizations (frontend)

Common subexpression elimination (CSE)

(option `-Oc/-OC`)

The compiler detects repeated use of the same (sub-)expression. Such a "common" expression is replaced by a variable that is initialized with the value of the expression to avoid recomputation. This method is called *common subexpression elimination* (CSE).

Expression simplification

(option `-Oe/-OE`)

Multiplication by 0 or 1 and additions or subtractions of 0 are removed. Such useless expressions may be introduced by macros or by the compiler itself (for example, array subscription).

Constant propagation

(option `-Op/-OP`)

A variable with a known value is replaced by that value.

Function Inlining

(option `-Oi/-OI`)

Small functions that are not too often called, are inlined. This reduces execution time at the cost of code size.

Code compaction (reverse inlining)

(option -Or/-OR)

Compaction is the opposite of *inlining functions*: large chunks of code that occur more than once, are transformed into a function. This reduces code size at the cost of execution speed.

Control flow simplification

(option -Of/-OF)

A number of techniques to simplify the flow of the program by removing unnecessary code and reducing the number of jumps. For example:

Switch optimization:

A number of optimizations of a switch statement are performed, such as removing redundant case labels or even removing an entire the switch.

Jump chaining:

A (conditional) jump to a label which is immediately followed by an unconditional jump may be replaced by a jump to the destination label of the second jump. This optimization speeds up execution.

Conditional jump reversal:

A conditional jump over an unconditional jump is transformed into one conditional jump with the jump condition reversed. This reduces both the code size and the execution time.

Dead code elimination:

Code that is never reached, is removed. The compiler generates a warning messages because this may indicate a coding error.

Subscript strength reduction

(option -Os/-OS)

An array of pointers subscripted with a loop iterator variable (or a simple linear function of the iterator variable), is replaced by the dereference of a pointer that is updated whenever the iterator is updated.

Loop transformations

(option -Ol/-OL)

Temporarily transform a loop with the entry point at the bottom, to a loop with the entry point at the top. This enables *constant propagation* in the initial loop test and code motion of loop invariant code by the CSE optimization.

Forward store

(option -Oo/-OO)

A temporary variable is used to cache multiple assignments (stores) to the same non-automatic variable.

2.6.2 Core specific optimizations (backend)

Coalescer

(option -Oa/-OA)

The coalescer seeks for possibilities to reduce the number of moves (MOV instruction) by smart use of registers. This optimizes both speed as code size.

Interprocedural register optimization

(option -Ob/-OB)

Register allocation is improved by taking note of register usage in functions called by a given function.

Peephole optimizations

(option -Oy/-OY)

The generated assembly code is improved by replacing instruction sequences by equivalent but faster and/or shorter sequences, or by deleting unnecessary instructions.

Instruction Scheduler

(option -Ok/-OK)

Instructions are rearranged to avoid structural hazards, for example by inserting another non-related instruction.

Generic assembly optimizations

(option -Og/-OG)

A set of target independent optimizations that increase speed and decrease code size.

2.6.3 Optimize for Size or Speed

You can tell the compiler to focus on execution speed or code size during optimizations. You can do this by specifying a size/speed trade-off level from **0** (speed) to **4** (size). This trade-off does not turn optimization phases on or off. Instead, its level is a weight factor that is used in the different optimization phases to influence the heuristics. The higher the level, the more the compiler focusses on code size optimization.

To choose a trade-off value read the description below about which optimizations are affected and the impact of the different trade-off values.

Note that the trade-off settings are directions and there is no guarantee that these are followed. The compiler may decide to generate different code if it assessed that this would improve the result.

To specify the size/speed trade-off optimization level:

1. From the **Project** menu, select **Project Options...**

The Project Options dialog appears.

2. Expand the **C Compiler** entry and select **Optimization**.
3. In the **Size/speed trade-off** field, select a level between **fully optimize for size** or **fully optimize for speed**.



See also [C compiler option `--tradeoff \(-t\)`](#) in section 5.1, *C Compiler Options*, of Chapter *Tool Options* of the reference manual.

Instruction Selection

Trade-off levels 0, 1 and 2: the compiler selects the instructions with the smallest number of cycles.

Trade-off levels 3 and 4: the compiler selects the instructions with the smallest number of bytes.

Switch Jump Chain versus Jump Table

Instruction selection for the `switch` statements follows different trade-off rules. A switch statement can result in a jump chain or a jump table. The compiler makes the decision between those by measuring and weighing bytes and cycles. This weigh is controlled with the trade-off values:

Trade-off value	Time	Size
0	100%	0%
1	75%	25%
2	50%	50%
3	25%	75%
4	0%	100%

Loop Optimization

For a top-loop, the loop is entered at the top of the loop. A bottom-loop is entered at the bottom. Every loop has a test and a jump at the bottom of the loop, otherwise it is not possible to create a loop. Some top-loops also have a conditional jump before the loop. This is only necessary when the number of loop iterations is unknown. The number of iterations might be zero, in this case the conditional jump jumps over the loop.

Bottom loops always have an unconditional jump to the loop test at the bottom of the loop.

Trade-off value	Try to rewrite top-loops to bottom-loops	Optimize loops for size/speed
0	no	speed
1	yes	speed
2	yes	speed
3	yes	size
4	yes	size

Example:

```
int a;

void i( int l, int m )
{
    int i;

    for ( i = m; i < l; i++ )
    {
        a++;
    }
    return;
}
```

Coded as a bottom loop (compiled with **--tradeoff=4**) is:

```
        rsubk   r3,r4,r3
        blei    r3,$L4          ;; unconditional jump to loop test at bottom
$L3:
        lwi     r4,r13,a-_base_r13
        addik   r4,r4,1
        swi     r4,r13,a-_base_r13
        addik   r3,r3,-1
        bnei    r3,$L3
$L4:                                ;; loop entry point
        rtspd   r15,8
        or      r0,r0,r0
```

Coded as a top loop (compiled with **--tradeoff=0**) is:

```
        lwi     r5,r13,a-_base_r13  ;; test for at least one loop iteration
        rsubk   r3,r4,r3             ;; can be omitted when number of iterations is known
        blei    r3,$L4
$L3:                                ;; loop entry point
        addik   r3,r3,-1
        bneid   r3,$L3
        addik   r5,r5,1
$L4:
        swi     r5,r13,a-_base_r13
        rtspd   r15,8
        or      r0,r0,r0
```

Automatic Function Inlining

You can enable automatic function inlining with the option **--optimize=+inline** (**-Oi**) or by using `#pragma optimize +inline`. This option is also part of the **-O3** predefined option set.

When automatic inlining is enabled, you can use the options **--inline-max-incr** and **--inline-max-size** (or their corresponding pragmas `inline_max_incr` / `inline_max_size`) to control automatic inlining. By default their values are set to -1. This means that the compiler will select a value depending upon the selected trade-off level. The defaults are:

Trade-off value	inline-max-incr	inline-max-size
0	100	50
1	50	25
2	20	20
3	10	10
4	0	0

For example with trade-off value 1, the compiler inlines all functions that are smaller or equal to 25 internal compiler units. After that the compiler tries to inline even more functions as long as the function will not grow more than 50%.

When these options/pragmas are set to a value ≥ 0 , the specified value is used instead of the values from the table above.

Static functions that are called only once, are always inlined, independent of the values chosen for `inline-max-incr` and `inline-max-size`.

Code Compaction

Trade-off levels 0 and 1: code compaction is disabled.

Trade-off level 2: only code compaction of matches outside loops.

Trade-off level 3: code compaction of matches outside loops, and matches inside loops of patterns that have an estimate execution frequency lower or equal to 10.

Trade-off level 4: code compaction of matches outside loops, and matches inside loops of patterns that have an estimate execution frequency lower or equal to 100.

For loops where the iteration count is unknown an iteration count of 10 is assumed.

For the execution frequency the compiler also accounts nested loops.



See also [C compiler option `--compact-max-size`](#) in section 5.1, *C Compiler Options*, of Chapter *Tool Options* of the reference manual.

2.7 Static Code Analysis

Static code analysis (SCA) is a relatively new feature in compilers. Various approaches and algorithms exist to perform SCA, each having specific pros and cons.

SCA Implementation Design Philosophy

SCA is implemented in the TASKING compiler based on the following design criteria:

- An SCA phase does not take up an excessive amount of execution time. Therefore, the SCA can be performed during a normal edit-compile-debug cycle.
- SCA is implemented in the compiler front-end. Therefore, no new makefiles or work procedures have to be developed to perform SCA.
- The number of emitted false positives is kept to a minimum. A false positive is a message that indicates that a correct code fragment contains a violation of a rule/recommendation. A number of warnings is issued in two variants, one variant when it is *guaranteed* that the rule is violated when the code is executed, and the other variant when the rules is *potentially* violated, as indicated by a preceding warning message.

For example see the following code fragment:

```
extern int some_condition(int);
void f(void)
{
    char buf[10];
    int i;

    for (i = 0; i <= 10; i++)
    {
        if (some_condition(i))
        {
            buf[i] = 0; /* subscript may be out of bounds */
        }
    }
}
```

As you can see in this example, if `i=10` the array `buf[]` might be accessed beyond its upper boundary, depending on the result of `some_condition(i)`. If the compiler cannot determine the result of this function at run-time, the compiler issues the warning "subscript is *possibly* out of bounds" preceding the CERT warning "ARR35: do not allow loops to iterate beyond the end of an array". If the compiler can determine the result, or if the `if` statement is omitted, the compiler can guarantee that the "subscript is out of bounds".

- The SCA implementation has real practical value in embedded system development. There are no real objective criteria to measure this claim. Therefore, the TASKING compilers support well known standards for safety critical software development such as the MISRA guidelines for creating software for safety critical automotive systems and secure "CERT C Secure Coding Standard" released by CERT. CERT is founded by the US government and studies internet and networked systems security vulnerabilities, and develops information to improve security.

Effect of optimization level on SCA results

The SCA implementation in the TASKING compilers has the following limitations:

- Some violations of rules will only be detected when a particular optimization is enabled, because they rely on the analysis done for that optimization, or on the transformations performed by that optimization. In particular, the constant propagation and the CSE/PRE optimizations are required for some checks. It is preferred that you enable these optimizations. These optimizations are enabled with the default setting of the optimization level (**-O2**).
- Some checks require cross-module inspections and violations will only be detected when multiple source files are compiled and linked together by the compiler in a single invocation.

2.7.1 C Code Checking: CERT C

The CERT C Secure Coding Standard provides rules and recommendations for secure coding in the C programming language. The goal of these rules and recommendations is to eliminate insecure coding practices and undefined behaviors that can lead to exploitable vulnerabilities. The application of the secure coding standard will lead to higher-quality systems that are robust and more resistant to attack.



For details about the standard, see the [CERT C Secure Coding Standard](http://www.cert.org/secure-coding) web site. For general information about CERT secure coding, see www.cert.org/secure-coding.

Versions of the CERT C standard

Version 1.0 of the CERT C Secure Coding Standard is available as a book by Robert C. Seacord [Addison-Wesley]. Whereas the web site is a wiki and reflects the latest information, the book serves as a fixed point of reference for the development of compliant applications and source code analysis tools.

The rules and recommendations supported by the TASKING compiler reflect the version of the CERT web site as of June 1 2009.

The following rules/recommendations implemented by the TASKING compiler, are not part of the book: [PRE11-C](#), [FLP35-C](#), [FLP36-C](#), [MSC32-C](#).



For a complete overview of the supported CERT C recommendations/rules by the TASKING compiler, see Chapter 9, [CERT C Secure Coding Standard](#)

Priority and Levels of CERT C

Each CERT C rule and recommendation has an assigned *priority*. Three values are assigned for each rule on a scale of 1 to 3 for

- severity – how serious are the consequences of the rule being ignored
 1. low (denial-of-service attack, abnormal termination)
 2. medium (data integrity violation, unintentional information disclosure)
 3. high (run arbitrary code)
- likelihood – how likely is it that a flaw introduced by ignoring the rule could lead to an exploitable vulnerability
 1. unlikely
 2. probable
 3. likely
- remediation cost – how expensive is it to comply with the rule
 1. high (manual detection and correction)
 2. medium (automatic detection and manual correction)

3. low (automatic detection and correction)

The three values are then multiplied together for each rule. This product provides a measure that can be used in prioritizing the application of the rules. These products range from 1 to 27. Rules and recommendations with a priority in the range of 1–4 are level 3 rules (low severity, unlikely, expensive to repair flaws), 6–9 are level 2 (medium severity, probable, medium cost to repair flaws), and 12–27 are level 1 (high severity, likely, inexpensive to repair flaws).

The TASKING compiler checks most of the level 1 and some of the level 2 CERT C recommendations/rules.

To apply CERT C code checking to your application

1. From the **Project** menu, select **Project Options...**

The Project Options dialog box appears.

2. Expand the **C Compiler** entry and select **CERT C Secure Code Checking**.
3. Make a selection from the **CERT C secure code checking** list.
4. If you select **Custom configuration**, expand the **Custom Configuration** entry and enable one or more individual recommendations/rules.

On the command line you can use the C compiler option `--cert`.

```
ctarget --cert={all | name[-name],...}
```

With `--diag=cert` you can see a list of the available checks, or you can use a three-letter mnemonic to list only the checks in a particular category. For example, `--diag=pre` lists all supported checks in the preprocessor category.

2.7.2 C Code Checking: MISRA-C

The C programming language is a standard for high level language programming in embedded systems, yet it is considered somewhat unsuitable for programming safety-related applications. Through enhanced code checking and strict enforcement of best practice programming rules, TASKING MISRA-C code checking helps you to produce more robust code.

MISRA-C specifies a subset of the C programming language which is intended to be suitable for embedded automotive systems. It consists of a set of rules, defined in *MISRA-C:2004, Guidelines for the Use of the C Language in Critical Systems* (Motor Industry Research Association (MIRA), 2004).

The compiler also supports MISRA-C:1998, the first version of MISRA-C. You can select this version with the following C compiler option:

```
--misrac-version=1998
```



For a complete overview of all MISRA-C rules, see Chapter 10, [MISRA-C Rules](#), in the reference manual.

Implementation issues

The MISRA-C implementation in the compiler supports nearly all rules. Only a few rules are not supported because they address documentation, run-time behavior, or other issues that cannot be checked by static source code inspection, or because they require an application-wide overview.

During compilation of the code, violations of the enabled MISRA-C rules are indicated with error messages and the build process is halted.

MISRA-C rules are divided in *required rules* and *advisory rules*. If rules are violated, errors are generated causing the compiler to stop. With the following options warnings, instead of errors, are generated for either or both the required rules and the advisory rules:

```
--misrac-required-warnings
```

```
--misrac-advisory-warnings
```



Note that not all MISRA-C violations will be reported when other errors are detected in the input source. For instance, when there is a syntax error, all semantic checks will be skipped, including some of the MISRA-C checks. Also note that some checks cannot be performed when the optimizations are switched off.

Quality Assurance report

To ensure compliance to the MISRA-C rules throughout the entire project, the TASKING linker can generate a MISRA-C Quality Assurance report. This report lists the various modules in the project with the respective MISRA-C settings at the time of compilation. You can use this in your company's quality assurance system to provide proof that company rules for best practice programming have been applied in the particular project.

To apply MISRA-C code checking to your application

1. From the **Project** menu, select **Project Options...**

The Project Options dialog box appears.

2. Expand the **C Compiler** entry and select **MISRA-C**.
3. In the **MISRA-C checking** box select a MISRA-C configuration. Select a predefined configuration for conformance with the required rules in the MISRA-C guidelines.
4. (Optional) In the **Custom 2004** or **Custom 1998** entry, specify the individual rules.

On the command line you can use the `--misrac` option.

```
ctarget --misrac={all | number [-number],...}
```



See [C compiler option `--misrac`](#) in section 5.1, *C Compiler Options* in Chapter *Tool Options* of the reference manual.
See [linker option `--misra-c-report`](#) in section 5.4, *Linker Options* in Chapter *Tool Options* of the reference manual.

2.8 C Compiler Error Messages

The C compiler reports the following types of error messages.

F (Fatal errors)

After a fatal error the compiler immediately aborts compilation.

E (Errors)

Errors are reported, but the compiler continues compilation. No output files are produced unless you have set the [C compiler option `--keep-output-files`](#) (the resulting output file may be incomplete).

W (Warnings)

Warning messages do not result into an erroneous assembly output file. They are meant to draw your attention to assumptions of the compiler for a situation which may not be correct. You can control warnings in the **C Compiler » Diagnostics** page of the **Project » Project Options...** menu ([C compiler option `--no-warnings \(-w\)`](#)).

I (Information)

Information messages are always preceded by an error message. Information messages give extra information about the error.

S (System errors)

System errors occur when internal consistency checks fail and should never occur. When you still receive the system error message

```
S9##: internal consistency check failed - please report
```

please report the error number and as many details as possible about the context in which the error occurred.

Display detailed information on diagnostics

1. From the **View** menu, select **Workspace Panels » System » Messages**.

The Messages panel appears.

2. In the **Messages** panel, right-click on the message you want more information on.

A popup menu appears.

3. Select **More Info**.

A Message Info box appears with additional information.

On the command line you can use the compiler option **--diag** to see an explanation of a diagnostic message:

```
ctarget --diag=[format:]{all | number,...}
```



See [C compiler option --diag](#) in section 5.1, *C Compiler Options* in Chapter *Tool Options* of the reference manual.



3 Using the C++ Compiler

Summary

This chapter describes the compilation process and explains how to call the C++ compiler. You should be familiar with the C++ language and with the ISO C language.

3.1 Introduction

The C++ compiler can be seen as a preprocessor or front end which accepts C++ source files or sources using C++ language features. The output generated by the C++ compiler is intermediate C, which can be translated with the TASKING C compiler.

The C++ compiler is part of a complete toolset. For details about the C compiler see chapter 2, [Using the C Compiler](#).

The C++ compiler takes the following files for input and output:

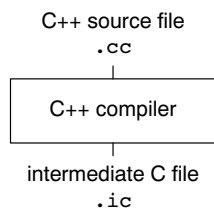


Figure 3-1: C++ compiler

Altium Designer uses a *makefile* to build your entire embedded project, from C++ source till the final ELF/DWARF 2 object file which serves as input for the debugger.

On the command line it is possible to call the C++ compiler separately from the other tools. However, it is recommended to use the control program for command line invocations of the toolset (see section 7.2, [Control Program](#), in Chapter [Using the Utilities](#)). With the control program it is possible to call the entire toolset with only one command line. Altium Designer also uses the control program to call the C++ compiler. Files with the extensions `.cc`, `.cpp` or `.cxx` are seen as C++ source files and passed to the C++ compiler.

The C++ compiler accepts the C++ language of the ISO/IEC 14882:1998 C++ standard, with some minor exceptions documented in chapter 2, [C++ Language](#) in the reference manual. It also accepts embedded C++ language extensions.

The C++ compiler does no optimization. Its goal is to produce quickly a complete and clean parsed form of the source program, and to diagnose errors. It does complete error checking, produces clear error messages (including the position of the error within the source line), and avoids cascading of errors. It also tries to avoid seeming overly finicky to a knowledgeable C or C++ programmer.

3.2 Calling the C++ Compiler

Altium Designer uses a *makefile* to build your entire project. This means that you cannot run the C++ compiler separately. If you compile a single C++ source file from within Altium Designer, the file is also compiled and assembled. However, you can set options specific for the C++ compiler. After you have built your project, the output files of the compilation step are available in your project directory, unless you specified an alternative output directory in the **Build Options** page of the *Project Options* dialog.

To compile and assemble your program

Click either one of the following buttons:



(Compile Active Document)

Compiles and assembles the currently selected file. This results in a relocatable object file (`.obj`).



(Compile Active Project)

Builds your entire project but only updates files that are out-of-date or have been changed since the last build, which saves time.

Or select **Recompile Embedded Project** from the **Projects** menu.

Builds your entire project unconditionally. All steps necessary to obtain the final `.abs` file are performed.

Select the right toolset

First make sure you have selected the correct toolset for your target.

1. From the **Project** menu, select **Project Options...**

The Project Options dialog box appears.

2. Select the correct **Device**.

Select a target processor (core)

If you have selected a toolset that supports several processor cores, by means of a Generic device, you need to choose a processor type first.

To access the processor options:

1. From the **Project** menu, select **Project Options...**

The Project Options dialog box appears.

2. Expand the **Processor** entry and select **Processor Definition**.
3. In the **Select Processor** box select a processor type.

Processor options affect the invocation of all tools in the toolset. In Altium Designer you only need to set them once.

To access the C++ compiler options

1. From the **Project** menu, select **Project Options...**

The Project Options dialog box appears.

2. Expand the **C++ Compiler** entry.
3. Select the sub-entries and set the options in the various pages.

The command line variant is shown simultaneously.

Invocation syntax on the command line (Windows Command Prompt)

The invocation syntax on the command line is:

```
cptarget [ [option]... [file]... ]...
```

The input *file* must be a C++ source file (`.cc`, `.cpp` or `.cxx`). **cp**target can be one of the supported C++ compilers. For example, **cpmb** (for the MicroBlaze).

Example:

```
cpmb test.cc
```

This compiles the file `test.cc` and generates the file `test.ic` which serves as input for the C compiler.



Note that C++ compiler options are only enabled if you have added a C++ file to your project, a file with the extension `.cc`, `.cpp` or `.cxx`.

3.2.1 Overview of C++ Compiler Options

You can set the following C++ compiler options in Altium Designer.

Menu entry	Command line
Build Options	
Include files path	<code>--include-directory=path,...</code>
C++ Compiler » Preprocessing	
User macro	<code>--define=macro[=value]</code>
Include this file before source	<code>--include-file=file,...</code>
Store the C++ compiler preprocess output (<i>file.pre</i>)	<code>--preprocess</code>
C++ Compiler » C++ Language	
Comply to embedded C++ subset	<code>--embedded-c++</code>
Support for I/O streams	<code>--io-streams</code>
Support for exception handling	<code>--exceptions</code>
Support for RTTI (run-time type information)	<code>--rtti</code>
Allow the 'wchar_t' keyword	<code>--wchar_t-keyword</code>
Language extensions:	
Allow Non-ANSI/ISO C++ features	<i>no option</i> <code>--strict</code>
Anachronisms	<code>--anachronisms</code>
Allow GNU C++ extensions	<code>--g++</code>
C++ Compiler » Precompiled Headers	
Automatically use and/or create a precompiled header file	<code>--pch</code>
Create precompiled header file	<code>--create-pch=filename</code>
Use precompiled header file	<code>--use-pch=filename</code>
Precompiled header file directory	<code>--pch-dir=directory-name</code>
C++ Compiler » Diagnostics	
Suppress all warnings	<code>--no-warnings</code>
Treat warnings as errors	<code>--warnings-as-errors</code>
Suppress C++ compiler "used before set" warnings	<code>--no-use-before-set-warnings</code>
Issue remarks on C++ code	<code>--remarks</code>
List all visited #included files	<code>--trace-includes</code>
C++ Compiler » Miscellaneous	
Force definition of virtual function tables	<code>--force-vtbl</code>
Suppress definition of virtual function tables	<code>--suppress-vtbl</code>
Minimal inlining of function calls	<code>--no-inlining</code>
Implicit inclusion of source files for finding templates	<code>--implicit-include</code>
Instantiation mode of external template entities	<code>--instantiate=mode</code>
Additional C++ compiler options	<i>options</i>

Table 3-1: C++ Compiler options in Altium Designer

Other C++ compiler options are only available on the command line.



For a complete overview of all options with extensive description, see section 5.2, [C++ Compiler Options](#), of Chapter *Tool Options* of the reference manual.

3.3 How the C++ Compiler Searches Include Files

When you use include files (with the `#include` statement), you can specify their location in several ways. The C++ compiler searches the specified locations in the following order:

1. If the `#include` statement contains an absolute pathname, the C++ compiler looks for this file. If no path or a relative path is specified, the C++ compiler looks in the same directory as the source file. This is only possible for include files that are enclosed in `"`.



This first step is not done for include files enclosed in `<>`.

2. When the C++ compiler did not find the include file, it looks in the directories that are specified in the **Build Options** tab of the *Project Options* dialog (equivalent to the command line option `--include-directory (-I)`).
3. When the compiler did not find the include file (because it is not in the specified include directory or because no directory is specified), it looks in the path(s) specified in the environment variable `CPTargetINC` (for example, `CPMBINC` for the MicroBlaze).
4. When the C++ compiler still did not find the include file, it finally tries the default `include.cpp` and `include` directory relative to the installation directory.
5. If the include file is still not found, the directories specified in the option `--sys-include` are searched.

If the include directory is specified as `-`, e.g., `-I-`, the option indicates the point in the list of `-I` or `--include-directory` options at which the search for file names enclosed in `<...>` should begin. That is, the search for `<...>` names should only consider directories named in `-I` or `--include-directory` options following the `-I-`, and the directories of items 3 and 4 above. `-I-` also removes the directory containing the current input file (item 1 above) from the search path for file names enclosed in `"..."`.

An include directory specified with the option `--sys-include` is considered a "system" include directory. Warnings are suppressed when processing files found in system include directories.

If the filename has no suffix it will be searched for by appending each of a set of include file suffixes. When searching in a given directory all of the suffixes are tried in that directory before moving on to the next search directory. The default set of suffixes is, no extension and `.stdh`. The default can be overridden using the command line option `--incl-suffixes`. A null file suffix cannot be used unless it is present in the suffix list (that is, the C++ compiler will always attempt to add a suffix from the suffix list when the filename has no suffix).

Example

Suppose that the C++ source file `test.cc` contains the following lines:

```
#include <stdio.h>
#include "myinc.h"
```

You can call the C++ compiler as follows:

```
cpTarget --include-directory=myinclude test.cc
```

First the C++ compiler looks for the file `stdio.h` in the directory `myinclude` relative to the current directory. If it was not found, the compiler searches in the environment variable and then in the default `include` directory.

The C++ compiler now looks for the file `myinc.h`, in the directory where `test.cc` is located. If the file is not there the C++ compiler searches in the directory `myinclude`. If it was still not found, the C++ compiler searches in the environment variable and then in the default `include.cpp` and `include` directories.

3.4 C++ Compiler Error Messages

The C++ compiler reports the following types of error messages.

F (Fatal errors)

Catastrophic errors, also called 'fatal errors', indicate problems of such severity that the compilation cannot continue. For example: command line errors, internal errors, and missing include files. If multiple source files are being compiled, any source files after the current one will not be compiled.

E (Errors)

Errors indicate violations of the syntax or semantic rules of the C++ language. Compilation continues, but object code is not generated.

W (Warnings)

Warnings indicate something valid but questionable. Compilation continues and object code is generated (if no errors are detected). You can control warnings in the **C++ Compiler » Diagnostics** page of the **Project » Project Options...** menu ([C++ compiler option --no-warnings](#)).

R (Remarks)

Remarks indicate something that is valid and probably intended, but which a careful programmer may want to check. These diagnostics are not issued by default. Compilation continues and object code is generated (if no errors are detected). To enable remarks, enable the option **Issue remarks on C++ code** in the **C++ Compiler » Diagnostics** page of the **Project » Project Options...** menu ([C++ compiler option --remarks](#)).

S (Internal errors)

Internal C++ compiler errors are caused by failed internal consistency checks and should never occur. However, if such a 'SYSTEM' error appears, please report the occurrence to Altium. Please include a small C++ program causing the error.

Message format

```
cptarget E0020: ["test.cc" 3] identifier "name" is undefined
```

With the command line option [--error-file=file](#) you can redirect messages to a file instead of stderr.

Note that the message identifies the file and line involved. Long messages are wrapped to additional lines when necessary.

You can change the severity of warning messages to errors with the option **Treat warnings as errors** in the **C++ Compiler » Diagnostics** page of the **Project » Project Options...** menu ([C++ compiler option --warnings-as-errors](#)).

For some messages, a list of entities is useful; they are listed following the initial error message:

```
cptarget E0308: ["test.cc" 4] more than one instance of overloaded
function "f" matches the argument list:
    function "f(int)"
    function "f(float)"
argument types are: (double)
```

In some cases, some additional context information is provided; specifically, such context information is useful when the C++ compiler issues a diagnostic while doing a template instantiation or while generating a constructor, destructor, or assignment operator function. For example:

```
cptarget E0265: ["test.cc" 7] "A::A()" is inaccessible
detected during implicit generation of "B::B()" at line 7
```

Without the context information, it is very hard to figure out what the error refers to.

Termination Messages

The C++ compiler writes sign-off messages to `stderr` if errors are detected. For example, one of the following forms of message

```
n errors detected in the compilation of "file".
```

```
1 catastrophic error detected in the compilation of "file".
```

```
n errors and 1 catastrophic error detected in the compilation of "file".
```

is written to indicate the detection of errors in the compilation. No message is written if no errors were detected. The following message

```
Error limit reached.
```

is written when the count of errors reaches the error limit (see the [option `--error-limit`](#)); compilation is then terminated. The message

```
Compilation terminated.
```

is written at the end of a compilation that was prematurely terminated because of a catastrophic error. The message

```
Compilation aborted
```

is written at the end of a compilation that was prematurely terminated because of an internal error. Such an error indicates an internal problem in the compiler. If such an internal error appears, please report the occurrence to Altium. Please include a small C++ program causing the error.

Summary

Profiling is the process of collecting statistical data about a running application. With these data you can analyze which functions are called, how often they are called and what their execution time is. This chapter describes the TASKING profiling method with code instrumentation techniques.

4.1 What is profiling?

Profiling is a collection of methods to gather data about your application which helps you to identify code fragments where execution consumes the greatest amount of time.

TASKING supplies a number of profiler tools each dedicated to solve a particular type of performance tuning problem. Performance problems can be solved by:

- Identifying time-consuming algorithms and rewrite the code using a more time-efficient algorithm.
- Identifying time-consuming functions and select the appropriate compiler optimizations for these functions (for example, enable loop unrolling or function inlining).
- Identifying time consuming loops and add the appropriate pragmas to enable the compiler to further optimize these loops.

A profiler helps you to find and identify the time consuming constructs and provides you this way with valuable information to optimize your application.

TASKING employs various schemes for collecting profiling data, depending on the capabilities of the target system and different information needs.

4.1.1 Three methods of profiling

There are several methods of profiling: recording by an instruction set simulator, profiling using the debugger and profiling with code instrumentation techniques. Each method has its advantages and disadvantages.

Profiling by an instruction set simulator

One way to gather profiling information is built into the instruction set simulator (ISS). The ISS records the time consumed by each instruction that is executed. The debugger then retrieves this information and correlates the time spent for individual instructions to C source statements.

Advantages

- it gives (cycle) accurate information with extreme fine granularity
- the executed code is identical to the non-profiled code

Disadvantages

- the method requires an ISS as execution environment

Profiling with the debugger

The second method of profiling is built into the debugger. You specify which functions you want to profile. The debugger places breakpoints on the function entry and all its exit addresses and measures the time spent in the function and its callees.

Advantages

- the executed code is identical to the non-profiled code

Disadvantage

- each time a profiling breakpoint is hit the target is stopped and control is passed to the debugger. Although the debugger restarts the application immediately, the applications performance is significantly reduced.

Profiling using code instrumentation techniques

The TASKING compiler contains an option to add code to your application which takes care of the profiling process. This is called *code instrumentation*. The gathered profiling data is first stored in the target's memory and will be written to a file when the application finishes execution or when the function `__prof_cleanup()` is called.

Advantages

- it can give a complete call graph of the application annotated with the time spend in each function and basic block
- this profiling method is execution environment independent
- the application is profiled while it executes on its aimed target taking real-life input

Disadvantage

- instrumentation code creates a significant run-time overhead, and instrumentation code and gathered data take up target memory

This method provides a valuable complement to the other two methods and will be described into more detail below.

4.2 Profiling using Code Instrumentation

Profiling can be used to determine which parts of a program take most of the execution time.

Once the collected data are presented, it may reveal which pieces of your code execute slower than expected and which functions contribute most to the overall execution time of a program. It gives you also information about which functions are called more or less often than expected. This information not only may lead to design flaws or bugs that had otherwise been unnoticed, it also reveals parts of the program which can be effectively optimized.

Important considerations

The code instrumentation method adds code to your original application which is needed to gather the profiling data. Therefore, the code size of your application increases. Furthermore, during the profiling process, the gathered data is initially stored into dynamically allocated memory of the target. The heap of your application should be large enough to store this data. Since code instrumentation is done by the compiler, assembly functions used in your program do not show up in the profile.

The profiling information is collected during the *actual execution* of the program. Therefore, the input of the program influences the results. If a part/function of the program is not activated while the program is profiled, no profile data is generated for that part/function.

It is *not* possible to profile applications that are compiled with the optimization **Code compaction** (**-Or**) option.

Overview of steps to perform

To obtain a profile using code instrumentation, perform the following steps:

1. Compile and link your program with profiling enabled
2. Execute the program to generate the profile data
3. Display the profile

4.2.1 Step 1: Build your Application for Profiling

The first step is to add the code that takes care of the profiling, to your application. This is done with compiler options:

1. From the **Project** menu, select **Project Options...**
The Project Options dialog box appears.
2. Expand the **C Compiler** entry and select **Debug Information**.
3. Enable the option **Generate profiling information**.
4. Enable one or more of the following suboptions to select which profiles should be obtained.
 - **Block counters** (not in combination with **Call graph** or **Function timers**)
 - **Call graph**
 - **Function counters**

- **Function timers**



Note that the more detailed information you request, the larger the overhead in terms of execution time, code size and heap space needed. The option **Generate Debug information** (`-g` or `--debug`) does not affect profiling, execution time or code size.

Block counters (not in combination with Call graph or Function timers)

This will instrument the code to perform basic block counting. As the program runs, it will count how many time it executed each branch of each `if` statement, each iteration of a `for` loop, and so on. Note that though you can combine Block counters with Function counters, this has no effect because Function counters is only a subset of Block counters.

Call graph (not in combination with Block counters)

This will instrument the code to reconstruct the run-time call graph. As the program runs it associates the caller with the gathered profiling data.

Function counters

This will instrument the code to perform function call counting. This is a subset of the basic Block counters.

Function timers (not in combination with Block counters/Function counters)

This will instrument the code to measure the time spent in a function. This includes the time spend in all called functions (callees).



For the command line, see the **C compiler option `--profile (-p)`** in section 5.1, *C Compiler Options* in Chapter *Tool Options* of the reference manual.

Rebuild your application:

5. From the **Project** menu select **Recompile Embedded Project *name***.

4.2.1.1 Profiling Modules and Libraries

Profiling individual modules

It is possible to profile individual C modules. In this case only limited profiling data is gathered for the functions in the modules compiled without the profiling option. When you use the suboption **Call graph**, the profiling data reveals which profiled functions are called by non-profiled functions. The profiling data does *not* show how often and from where the non-profiled functions themselves are called. Though this does not affect the flat profile, it might reduce the usefulness of the call graph.

Profiling library functions

Altium Designer and/or the control program will link your program with the standard version of the C library `cmba.lib`. Functions from this library which are used in your application, will not be profiled. If you do want to incorporate the library functions in the profile, you must set the appropriate compiler options in the C library makefiles and rebuild the library.

4.2.1.2 Linking Profiling Libraries

When building your application, the application must be linked against the corresponding profile library. Altium Designer (or the control program) automatically select the correct library based on the profiling options you specified. However, if you compile, assemble and link your application manually, make sure you specify the correct library.



See section 6.4, *Linking with Libraries*, in Chapter *Using the Linker* for an overview of the (profiling) libraries.

4.2.2 Step 2: Execute the Application

Once you have compiled and linked the application for profiling, it must be executed to generate the profiling data. Run the program as usual: the program should run normally taking the same input as usual and producing the same output as usual. The application will run somewhat slower than normal because of the extra time spent on collecting the profiling data.

Startup code

The startup code initializes the profiling functions by calling the function `__prof_init()`. Altium Designer will automatically make the required modifications to the startup code. Or, when you use the control program, this extracts the correct startup code from the C library.

If you use your own startup code, you must manually insert a call to the function `__prof_init` just before the call to `_main` and its stack setup.

An application can have multiple entry points, such as `main()` and other functions that are called by interrupt. This does not affect the profiling process.

Small heap problem

When the program does not run as usual, this is typically caused by a shortage of heap space. In this case the following message is issued (when running with file system simulation, it is displayed on the Debug console):

To solve this problem, increase the size of the heap:

1. From the **Project** menu, select **Project Options...**

The Project Options dialog box appears.

2. Expand the **Linker** entry and select **Stack/Heap**
3. Enter a new value in the **Heap size (bytes)** field enter a new value and/or enable the option **Expand heap size if space left**.

Presumable incorrect call graph

The call graph is based on the *compiled* source code. Due to compiler optimizations the call graph may therefore seem incorrect at first sight. For example, the compiler can replace a function call immediately followed by a return instruction by a jump to the callee, thereby merging the callee function with the caller function. In this case the time spent in the callee function is not recorded separately anymore, but added to the time spent in the caller function (which, as said before, now holds the callee function). This represents exactly the structure of your source in assembly but may differ from the structure in the initial C source.

After execution

When the program has finished (returning from `main()`), the exit code calls the function `__prof_cleanup(void)`. This function writes the gathered profiling data to a file on the host system using the debugger's file system simulation features. If your program does *not* return from `main()`, you can force this by inserting a call to the function `__prof_cleanup()` in your application source code. Please note the double underscores when calling from C code!

The resulting profiling data file is named `amon.prf`. This file is written to the current working directory.



If your program does not run under control of the debugger and therefore cannot use the file simulation system (FSS) functionality to write a file to the host system, you must implement a way to pass the profiling data gathered on the target to the host. Adapt the function `__prof_cleanup()` in the profiling libraries or the underlying I/O functions for this purpose.

4.2.3 Step 3: Displaying Profiling Results

The result of the profiler can be displayed in Altium Designer. First you must stop or complete the entire simulation. Altium Designer then converts the profiling data in the file `amon.prf` to an XML file. This file is read and its information is displayed.

1. From the **Debug** menu, select **Stop Debugging** (Ctrl + F3).

The Profiler window opens automatically.

The Profiler window

The Profiler window contains the following tabs:

All Functions	Shows the profiling information of all functions in all C source modules belonging to your application.
Files	Shows the profiling data of the individual C source modules that make up your application. Only the functions of the file you select in this tab are shown on the Functions tab. If you double click on a module, the functions tab is shown with the functions of the selected module.
Functions	Shows the profiling data of the functions in the C source module you selected in the Files tab.

Each tab shows various panes with tables of information. Remember that it depends on the profiling options you have set before compiling, which information is available.

Result pane	Shows the timing and call information for all functions and/or blocks in the profile. You can sort the list by clicking on its column headers. To focus a function, click on a row.
Callers pane	Shows the functions that called the focus function.
Callees pane	Shows the functions that are called by the focus function.

- Double clicking on a function in any of the panes, makes the function the focussed function.
- To sort the rows in the table, click on one of the column headers.

The profiling information

Based on the profiling options you have set before compiling your application, some profiling data may be present and some may be not. The columns in the tables represent the following information:

Function	The function for which profiling data is gathered and (if present) the code blocks in each function.
Module	The C source module in which the function resides.
% Time	The relative amount of time spent in this function. These should add up to 100%.
Hit Count	Number of times the function has been executed.
Time (s)	Amount of time in seconds that was totally spent executing this function.

Viewing previously recorded profiling results

Each time you run your application, new profiling information is gathered, stored in the file `amon.prf` and finally converted to an XML files. The XML files of each run are stored in you project folder. At any time, you can reload these profiling results in the profiler. First, open the Profiler if it is not open anymore:

1. From the **Debug** menu select **Show Profiler**.

The Profiler window opens and a workspace panel Profiling Target becomes active. The lower part of the workspace panel shows a list of all profiling results in your directory.

2. To open a previously recorded profiling results, double click on one of the listed XML files.

Filtering information

Especially with large application, the amount of profiling information may be overwhelming. The workspace panel **Profiling Target** shows a hierarchic tree of your application. Expand and collapse the three branches and enable the check boxes of those parts you want to view.



To view only the profiling information of a single C source module, double click on a C source module in the **Files** tab.

Summary

This chapter describes the assembly process and explains how to call the assembler.

5.1 Introduction

The assembler converts hand-written or compiler-generated assembly language programs into machine language, resulting in object files in the ELF/DWARF object format.

The assembler takes the following files for input and output:

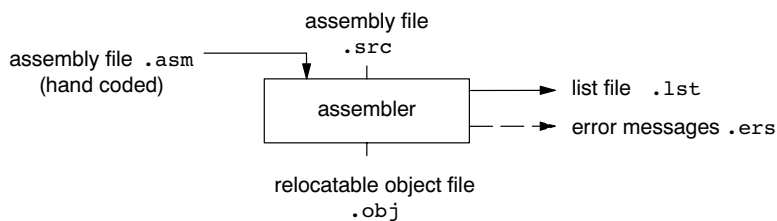


Figure 5-1: Assembler

The following information is described:

- The assembly process.
- How to call the assembler and how to use its options. An extensive list of all options and their descriptions is included in the reference manual.
- The various assembler optimizations.
- How to generate a list file
- Types of assembler messages

5.2 Assembly Process

The assembler generates relocatable output files with the extension `.obj`. These files serve as input for the linker.

Phases of the assembly process

1. Parsing of the source file: preprocessing of assembler directives and checking of the syntax of instructions
2. Optimization (instruction size and generic instructions)
3. Generation of the relocatable object file and optionally a list file

The assembler integrates file inclusion and macro facilities. See section 4.9, [Macro Operations](#), in Chapter *Assembly Language* for more information.

5.3 Calling the Assembler

Altium Designer uses a *makefile* to build your entire project. You can set options specific for the assembler. After you have built your project, the output files of the assembly step are available in your project directory, unless you specified an alternative output directory in the **Build Options** page of the *Project Options* dialog.

To assemble your program

Click either one of the following buttons:



(Compile Active Document)

Assembles the currently selected assembly file (.asm or .src). This results in a relocatable object file (.obj).



(Compile Active Project)

Builds your entire project but only updates files that are out-of-date or have been changed since the last build, which saves time.

Or select **Recompile Embedded Project** from the **Projects** menu.

Builds your entire project unconditionally. All steps necessary to obtain the final .abs file are performed.

Select the right toolset

First make sure you have selected the correct toolset for your target.

1. From the **Project** menu, select **Project Options...**

The Project Options dialog box appears.

2. Select the correct **Device**.

Select a target processor (core)

If you have selected a toolset that supports several processor cores, by means of a Generic device, you need to choose a processor type first.

To access the processor options:

1. From the **Project** menu, select **Project Options...**

The Project Options dialog box appears.

2. Expand the **Processor** entry and select **Processor Definition**.

3. In the **Select Processor** box select a processor type.

Processor options affect the invocation of all tools in the toolset. In Altium Designer you only need to set them once.

To access the assembler options

1. From the **Project** menu, select **Project Options...**

The Project Options dialog box appears.

2. Expand the **Assembler** entry.

3. Select the sub-entries and set the options in the various pages.

The command line variant is shown simultaneously.

Invocation syntax on the command line (Windows Command Prompt)

The invocation syntax on the command line is:

```
astarget [ [option]... [file]... ]...
```

The input *file* must be an assembly source file (.asm or .src). **astarget** can be one of the supported assemblers. For example, **asmb** (for the MicroBlaze).

Example:

```
asmb test.asm
```

This assembles the file `test.asm` and generates the file `test.obj` which serves as input for the linker.

5.3.1 Overview of Assembler Options

You can set the following assembler options in Altium Designer.

Menu entry	Command line
Build Options	
Include files path	<code>-ldir</code>
Processor » Processor Definition	
Barrel shifter present	<code>--use-hardware=b</code>
Divide unit present	<code>--use-hardware=d</code>
Multiply unit present	<code>--use-hardware=m</code>
Floating-point unit present	<code>--use-hardware=f</code>
MSRSET and MSRCLR instructions present	<code>--use-hardware=s</code>
PCMPBF, PCMPEQ and PCMPNE instructions present	<code>--use-hardware=p</code>
Assembler » Preprocessing	
User macro	<code>-Dmacro[=value]</code>
Include this file before source	<code>-Hfile</code>
Assembler » Optimization	
Generic instructions	<code>-Og</code>
Jump chains	<code>-Oj</code>
Instruction size	<code>-Os</code>
Assembler » Debug Information	
Symbolic Debug Generation	<code>-gs</code>
Automatic HLL or assembly level debug information	
Custom debug information	<code>-gAHLS</code>
No debug information	
Custom debug information	<code>-gflags</code>
Assembler source line information	<code>-ga</code>
Pass HLL debug information	<code>-gh</code>
Assembler local symbols information	<code>-gl</code>
Assembler » List File	
Generate list file	<code>-l</code>
Display section information	<code>-tl</code>
List file format	<code>-Lflags</code>
Assembler » Diagnostics	
Error reporting	<i>no option</i> <code>-w</code>
Report all warnings	<code>-w</code>
Suppress all warnings	<code>-wnum[,num]...</code>
Suppress specific warnings	
Treat warnings as errors	<code>--warnings-as-errors[=n,...]</code>

Menu entry	Command line
Assembler » Miscellaneous	
Assemble case sensitive (required for C language)	-c (case <i>insensitive</i>)
Labels are by default: local (default) global	-il -ig
Additional assembler options	<i>options</i>

Table 5-1: Altium Designer assembler options

The following assembler options are only available on the command line:

Description	Command line
Display invocation syntax	--help [= <i>item</i> ,...]
Check source (check syntax without generating code)	--check
Show description of diagnostic(s)	--diag =[<i>fmt</i> :]{ all <i>nr</i> ,...}
Preprocess only	-E
Emit local symbols	--emit-locals
Redirect diagnostic messages to a file	--error-file [= <i>file</i>]
Set the maximum <i>number</i> of emitted errors	--error-limit = <i>number</i>
Read options from <i>file</i>	-f <i>file</i>
Keep output file after errors	-k
Select TASKING preprocessor or no preprocessor	-m { <i>t</i> <i>n</i> }
Allow nested sections	-N
Specify name of output file	-o <i>file</i>
Verbose information	-v
Display version header only	-V

Table 5-2: Additional assembler options



For a complete overview of all options with extensive descriptions, see section 5.3, *Assembler Options*, of Chapter *Tool Options* of the reference manual.

5.4 How the Assembler Searches Include Files

When you use include files (with the `.INCLUDE` directive), you can specify their location in several ways. The assembler searches the specified locations in the following order:

1. If the `.INCLUDE` directive contains a path name, the assembler looks for this file. If no path is specified, the assembler looks in the same directory as the source file.
2. When the assembler did not find the include file, it looks in the directories that are specified in the **Build Options** page of the *Project Options* dialog (equivalent to the **-I** command line option).
3. When the assembler did not find the include file (because it is not in the specified include directory or because no directory is specified), it looks in the path(s) specified in the environment variable `AStargetINC` (for example, `ASMBINC` for the MicroBlaze).
4. When the assembler still did not find the include file, it finally tries the default `include` directory relative to the installation directory.

Example

Suppose that the assembly source file `test.asm` contains the following lines:

```
.INCLUDE 'myinc.inc'
```

You can call the assembler as follows:

```
astarget -Imyinclude test.asm
```

First the assembler looks for the file `myinc.inc` in the directory where `test.asm` is located. If the file is not there the assembler searches in the directory `myinclude`. If it was still not found, the assembler searches in the environment variable and then in the default `include` directory.

5.5 Assembler Optimizations

The assembler performs various optimizations to reduce the size of assembled applications. There are two options available to influence the degree of optimization.

To enable or disable optimizations

1. From the **Project** menu, select **Project Options...**

The Project Options dialog box appears.

2. Expand the **Assembler** entry and select **Optimization**.

You can enable or disable the optimizations described below. The command line option for each optimization is given in brackets.



See also option **--optimize (-O)** in section 5.3, *Assembler Options*, in Chapter *Tool Options* of the reference manual.

Allow generic instructions

(option **-Og/-OG**)

When this option is enabled, you can use generic instructions in your assembly source. The assembler tries to replace instructions by faster or smaller instructions.

For example, the MicroBlaze generic instruction `CP R2,R1` is replaced by `ADDIK R2,R1,0`.

By default this option is enabled. If you turn off this optimization, generic instructions are not allowed. In that case you have to use hardware instructions.

Optimize jump chains

(option **-Oj/-OJ**)

When this option is enabled, the assembler replaces chained jumps by a single jump instruction. For example, a jump from *a* to *b* immediately followed by a jump from *b* to *c*, is replaced by a jump from *a* to *c*. By default this option is disabled.

Optimize instruction size

(option **-Os/-OS**)

When this option is enabled, the assembler tries to find the shortest possible operand encoding for instructions. By default this option is enabled.

5.6 Generating a List File

The list file is an additional output file that contains information about the generated code. You can customize the amount and form of information.

If the assembler generates errors or warnings, these are reported in the list file just below the source line that caused the error or warning.

To generate a list file

1. From the **Project** menu, select **Project Options...**

The Project Options dialog box appears.

2. Expand the **Assembler** entry and select **List File**.

3. Select **Generate list file**.
4. (Optional) Enable the options to include that information in the list file.

Example on the command line (Windows Command Prompt)

The following command generates the list file `test.lst`:

```
astarget -l test.asm
```

5.7 Assembler Error Messages

The assembler produces error messages of the following types.

F (Fatal errors)

After a fatal error the assembler immediately aborts the assembly process.

E (Errors)

Errors are reported, but the assembler continues assembling. No output files are produced unless you have set the [assembler option `--keep-output-files`](#) (the resulting output file may be incomplete).

W (Warnings)

Warning messages do not result into an erroneous assembly output file. They are meant to draw your attention to assumptions of the assembler for a situation which may not be correct. You can control warnings in the **Assembler » Diagnostics** page of the **Project » Project Options...** menu ([assembler option `--no-warnings`](#)).

Display detailed information on diagnostics

1. From the **View** menu, select **Workspace Panels » System » Messages**.

The Messages panel appears.

2. In the **Messages** panel, right-click on the message you want more information on.

A popup menu appears.

3. Select **More Info**.

A Message Info box appears with additional information.

On the command line you can use the assembler option `--diag` to see an explanation of a diagnostic message:

```
astarget --diag=[format:]{all | number,...}
```



See [assembler option `--diag`](#) in section 5.3, *Assembler Options* in Chapter *Tool Options* of the reference manual.

Summary

This chapter describes the linking process, how to call the linker and how to control the linker with a script file.

6.1 Introduction

The TASKING linker is a combined linker/locator. The linker phase combines relocatable object files (.obj files, generated by the assembler), and libraries into a single *relocatable linker object file* (.out). The locator phase assigns absolute addresses to the linker object file and creates an absolute object file which you can load into a target processor. From this point the term *linker* is used for the combined linker/locator.

The linker can simultaneously link and locate all programs for all cores available on a target board. The target board may be of arbitrary complexity. A simple target board may contain one standard processor with some external memory that executes one task. A complex target board may contain multiple standard processors and DSPs combined with configurable IP-cores loaded in an FPGA. Each core may execute a different program, and external memory may be shared by multiple cores.

The linker takes the following files for input and output:

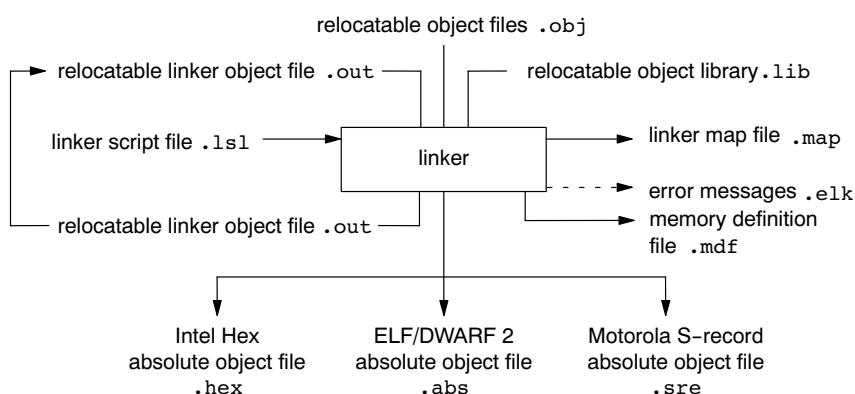


Figure 6-1: Linker

This chapter first describes the linking process. Then it describes how to call the linker and how to use its options. An extensive list of all options and their descriptions is included in section 5.4, [Linker Options](#), of the reference manual.

To control the link process, you can write a script for the linker. This chapter shortly describes the purpose and basic principles of the *Linker Script Language* (LSL) on the basis of an example. A complete description of the LSL is included in Chapter 8, [Linker Script Language](#), of the reference manual.

6.2 Linking Process

The linker combines and transforms relocatable object files (.obj) into a single absolute object file. This process consists of two phases: the linking phase and the locating phase.

In the first phase the linker combines the supplied relocatable object files and libraries into a single relocatable object file. In the second phase, the linker assigns absolute addresses to the object file so it can actually be loaded into a target.

Glossary of terms

Term	Definition
Absolute object file	Object code in which addresses have fixed absolute values, ready to load into a target.
Address	A specification of a location in an address space.
Address space	The set of possible addresses. A core can support multiple spaces, for example in a Harvard architecture the addresses that identify the location of an instruction refer to <i>code</i> space, whereas addresses that identify the location of a data object refer to a <i>data</i> space.
Architecture	A description of the characteristics of a core that are of interest for the linker. This encompasses the address space(s) and the internal bus structure. Given this information the linker can convert logical addresses into physical addresses.
Copy table	A section created by the linker. This section contains data that specifies how the startup code initializes the data sections. For each section the copy table contains the following fields: <ul style="list-style-type: none"> – action: defines whether a section is copied or zeroed – destination: defines the section's address in RAM – source: defines the sections address in ROM – length: defines the size of the section in MAUs of the destination space
Core	An instance of an architecture.
Derivative	The design of a processor. A description of one or more cores including internal memory and any number of buses.
Library	Collection of relocatable object files. Usually each object file in a library contains one symbol definition (for example, a function).
Logical address	An address as encoded in an instruction word, an address generated by a core (CPU).
LSL file	The set of linker script files that are passed to the linker.
MAU	Minimum Addressable Unit. For a given processor the number of bits between an address and the next address. This is not necessarily a byte or a word.
Object code	The binary machine language representation of the C source.
Physical address	An address generated by the memory system.
Processor	An instance of a derivative. Usually implemented as a (custom) chip, but can also be implemented in an FPGA, in which case the derivative can be designed by the developer.
Relocatable object file	Object code in which addresses are represented by symbols and thus relocatable.
Relocation	The process of assigning absolute addresses.
Relocation information	Information about how the linker must modify the machine code instructions when it relocates addresses.
Section	A group of instructions and/or data objects that occupy a contiguous range of addresses.
Section attributes	Attributes that define how the section should be linked or located.
Target	The hardware board on which an application is executing. A board contains at least one processor. However, a complex target may contain multiple processors and external memory and may be shared between processors.
Unresolved reference	A reference to a symbol for which the linker did not find a definition yet.

Table 6–1: Glossary of terms

6.2.1 Phase 1: Linking

The linker takes one or more relocatable object files and/or libraries as input. A relocatable object file, as generated by the assembler, contains the following information:

- *Header information:* Overall information about the file, such as the code size, name of the source file it was assembled from, and creation date.
- *Object code:* Binary code and data, divided into various named sections. Sections are contiguous chunks of code that have to be placed in specific parts of the memory. The program addresses start at zero for each section in the object file.
- *Symbols:* Some symbols are exported – defined within the file for use in other files. Other symbols are imported – used in the file but not defined (external symbols). Generally these symbols are names of routines or names of data objects.

- *Relocation information*: A list of places with symbolic references that the linker has to replace with actual addresses. When in the code an external symbol (a symbol defined in another file or in a library) is referenced, the assembler does not know the symbol's size and address. Instead, the assembler generates a call to a preliminary relocatable address (usually 0000), while stating the symbol name.
- *Debug information*: Other information about the object code that is used by a debugger. The assembler optionally generates this information and can consist of line numbers, C source code, local symbols and descriptions of data structures.

The linker resolves the external references between the supplied relocatable object files and/or libraries and combines the files into a single relocatable linker object file.

The linker starts its task by scanning all specified relocatable object files and libraries. If the linker encounters an unresolved symbol, it remembers its name and continues scanning. The symbol may be defined elsewhere in the same file, or in one of the other files or libraries that you specified to the linker. If the symbol is defined in a library, the linker extracts the object file with the symbol definition from the library. This way the linker collects all definitions and references of all of the symbols.

Next, the linker combines sections with the same section name and attributes into single sections. The linker also substitutes (external) symbol references by (relocatable) numerical addresses where possible. At the end of the linking phase, the linker either writes the results to a file (a single relocatable object file) or keeps the results in memory for further processing during the locating phase.

The resulting file of the linking phase is a single relocatable object file (`.out`). If this file contains unresolved references, you can link this file with other relocatable object files (`.obj`) or libraries (`.lib`) to resolve the remaining unresolved references.

With the linker command line option `--link-only`, you can tell the linker to only perform this linking phase and skip the locating phase. The linker complains if any unresolved references are left.

6.2.2 Phase 2: Locating

In the locating phase, the linker assigns absolute addresses to the object code, placing each section in a specific part of the target memory. The linker also replaces references to symbols by the actual address of those symbols. The resulting file is an absolute object file which you can actually load into a target memory. Optionally, when the resulting file should be loaded into a ROM device the linker creates a so-called copy table section which is used by the startup code to initialize the data sections.

Code modification

When the linker assigns absolute addresses to the object code, it needs to modify this code according to certain rules or *relocation expressions* to reflect the new addresses. These relocation expressions are stored in the relocatable object file. Consider the following snippet of x86 code that moves the contents of variable `a` to variable `b` via the `eax` register:

```
A1 3412 0000 mov a,%eax    (a defined at 0x1234, byte reversed)
A3 0000 0000 mov %eax,b    (b is imported so the instruction refers to
                           0x0000 since its location is unknown)
```

Now assume that the linker links this code so that the section in which `a` is located is relocated by 0x10000 bytes, and `b` turns out to be at 0x9A12. The linker modifies the code to be:

```
A1 3412 0100 mov a,%eax    (0x10000 added to the address)
A3 129A 0000 mov %eax,b    (0x9A12 patched in for b)
```

These adjustments affect instructions, but keep in mind that any pointers in the data part of a relocatable object file have to be modified as well.

Output formats

The linker can produce its output in different file formats. The default ELF/DWARF 2 format (`.abs`) contains an image of the executable code and data, and can contain additional debug information. The Intel-Hex format (`.hex`) and Motorola S-record format (`.sre`) only contain an image of the executable code and data. You can specify a format with the options `--output (-o)` and `--chip-output (-c)`.

Controlling the linker

Via a so-called *linker script file* you can gain complete control over the linker. The script language is called the *Linker Script Language* (LSL). Using LSL you can define:

- The memory installed in the embedded target system:

To assign locations to code and data sections, the linker must know what memory devices are actually installed in the embedded target system. For each physical memory device the linker must know its start-address, its size, and whether the memory is read-write accessible (RAM) or read-only accessible (ROM).

- How and where code and data should be placed in the physical memory:

Embedded systems can have complex memory systems. If for example on-chip and off-chip memory devices are available, the code and data located in internal memory is typically accessed faster and with dissipating less power. To improve the performance of an application, specific code and data sections should be located in on-chip memory. By writing your own LSL file, you gain full control over the locating process.

- The underlying hardware architecture of the target processor.

To perform its task the linker must have a model of the underlying hardware architecture of the processor you are using. For example the linker must know how to translate an address used within the object file (a logical address) into an offset in a particular memory device (a physical address). In most linkers this model is hard coded in the executable and can not be modified. For the TASKING linker this hardware model is described in the linker script file. This solution is chosen to support configurable cores that are used in system-on-chip designs.



When you want to write your own linker script file, you can use the standard linker script files with architecture descriptions delivered with the product.



See also section 6.9, [Controlling the Linker with a Script](#).

6.3 Calling the Linker

In Altium Designer you can set options specific for the linker. Altium Designer creates and uses a *makefile* to build your entire project. After you have build your project, the output files of the linking step are available in your project directory, unless you specified an alternative output directory in the **Build Options** page of the *Project Options* dialog.

To link your program

Click the following button:



(Compile Active Project)

Builds your entire project but only updates files that are out-of-date or have been changed since the last build, which saves time.

Or select **Recompile Embedded Project** from the **Projects** menu.

Builds your entire project unconditionally. All steps necessary to obtain the final `.abs` file are performed.

To access the linker options

1. From the **Project** menu, select **Project Options...**

The Project Options dialog box appears.

2. Expand the **Linker** entry.

3. Select the sub-entries and set the options in the various pages.

The command line variant is shown simultaneously.

Invocation syntax on the command line (Windows Command Prompt)

The invocation syntax on the command line is:

```
lkmb [ [option]... [file]... ]...
```

When you are linking multiple files, either relocatable object files (`.obj`) or libraries (`.lib`), it is important to specify the files in the right order. This is explained in Section 6.4, [Linking with Libraries](#).

Example:

```
lkmb -dmb.lsl test.obj
```

This links and locates the file `test.obj` and generates the file `test.abs`.

6.3.1 Overview of Linker Options

You can set the following linker options in Altium Designer.

Menu entry	Command line
Build Options	
Library files path	-Ldir
Linker » Output Format	
Output format Absolute file for debuggers (.abs) Library for TASKING linker (.lib)	-o[file][:format[:addr_size]]...
Intel Hex records for EPROM programmers (.hex)	-c[basename]:IHEX[:addr_size],...
Motorola S-records for EPROM programmers (.sre)	-c[basename]:SREC[:addr_size],...
Linker » Libraries	
Link default C libraries	-lx
Rescan libraries to solve unresolved externals	--no-rescan (disables rescan)
Linker » Optimization	
Optimization level No optimization Default optimization Full optimization Custom optimization	-O0 -O1 -O2
Custom optimization	-Oflags
Linker » Map File	
Generate a memory map file (.map)	-M
Map file format	-mflags
Linker » Diagnostics	
Error reporting Report all warnings Suppress all warnings Suppress specific warnings	<i>no option</i> -w -w -wnum[,num]...
Treat warnings as errors	--warnings-as-errors[=number,...]
Linker » Miscellaneous	
Include symbolic debug information	-S (strips debug information)
Link case sensitive (required for C language)	--case-insensitive
Dump processor and memory info from LSL file	--lsl-dump[=file]
Use project specific LSL file	-dfile
User macro	-Dmacro[=def]
Import the following data object files	--import-object=file,...
Additional linker options	<i>options</i>

Table 6-2: Altium Designer Linker options

The following linker options are only available on the command line:

Description	Command line
Display invocation syntax	--help [= <i>item</i> ,...]
Show description of diagnostic(s)	--diag =[<i>fmt</i> :]{ all <i>nr</i> ,...}
Specify a symbol as unresolved external	-esymbol
Redirect diagnostic messages to a file with extension <code>.elk</code>	--error-file [= <i>file</i>]
Read options from <i>file</i>	-f file
Scan libraries in given order	--first-library-first
Add <i>dir</i> to LSL include file search path	-ldir
Do not use standard copy table for initialization	-i
Search only in -L directories, not in default path	--ignore-default-library-path
Keep output files after errors	-k
Link only, do not locate	--link-only
Check LSL file(s) and exit	--lsl-check
Activate muncher in pre-locate phase	--munch
Do not generate ROM copy	-N
Locate all ROM sections in RAM	--non-romable
Do not decode C++ symbols	-P
Link incrementally	-r
Display version header only	-V
Verbose / extra verbose information	-v / -vv

Table 6-3: Additional Linker options



For a complete overview of all options with extensive description, see section 5.4, [Linker Options](#), of the reference manual.

6.4 Linking with Libraries

There are two kinds of libraries: system libraries and user libraries.

System library

System libraries are stored in the directory:

`<Altium Designer installation>\System\Tasking\cmb\lib\`

An overview of the system libraries is given in the following table:

Libraries	Description
cmba.lib cmbab.lib cmbabf.lib cmbad.lib cmbadb.lib cmbadbf.lib cmbadf.lib cmbaf.lib cmbam.lib cmbamb.lib cmbambf.lib cmbamd.lib cmbamdb.lib cmbamdbf.lib cmbamdf.lib cmbamf.lib	C library (some functions also need the floating-point library) b = use barrel shift instructions d = use divide instructions f = use floating-point instructions m = use multiply instructions
cmbas.lib cmba*s.lib	Single precision C library (some functions also need the floating-point library)
fpmba.lib fpmba*.lib	Floating-point library
rtmba.lib rtmba*b.lib	Run-time library
pbmba*.lib pcmba*.lib pctmba*.lib pdmba*.lib ptmba*.lib	Profiling libraries: pb = block/function counter pc = call graph pct = call graph and timing pd = dummy pt = function timing
cpmb*[x][s].lib	C++ libraries x = exception handling s = single precision floating-point
stlmb*[x][s].lib	STLport C++ libraries

Table 6-4: Overview of libraries

To link the default C (system) libraries

1. From the **Project** menu, select **Project Options...**
The Project Options dialog box appears.
2. Expand the **Linker** entry and select **Libraries**.
3. Select **Link default C libraries**.
4. Expand the **C Compiler** entry and select **Floating-Point**.
5. Enable or disable **Use single precision floating-point only**.
6. Click **OK** to accept the linker options.

When you want to link system libraries from the command line, you must specify this with the option **--library (-l)**. For example, to specify the system library `cmba.lib`, type:

```
lkmb -lcmba test.obj
```

User library

You can create your own libraries. Section 7.4, [Librarian](#), in Chapter *Using the Utilities*, describes how you can use the librarian to create your own library with object modules.

To link user libraries

1. From the **Project** menu, select **Add Existing to Project...**
The Choose Documents to add to Project dialog box appears.
2. Select the libraries you want to add and click **Open**.
3. Click **OK** to accept the new project settings.

When you want to link user libraries from the command line, you must specify their filenames on the command line:

```
lkmb start.obj mylib.lib
```

If the library resides in a sub-directory, specify that directory with the library name:

```
lkmb start.obj mylibs\mylib.lib
```

If you do not specify a directory, the linker searches the library in the current directory only.

Library order

The order in which libraries appear on the command line is important. By default the linker processes object files and libraries in the order in which they appear at the command line. Therefore, when you use a weak symbol construction, like `printf`, in an object file or your own library, you must position this object/library before the C library.

With the option **--first-library-first** you can tell the linker to scan the libraries from left to right, and extract symbols from the first library where the linker finds it. This can be useful when you want to use newer versions of a library routine:

```
lkmb --first-library-first a.lib test.obj b.lib
```

If the file `test.obj` calls a function which is both present in `a.lib` and `b.lib`, normally the function in `b.lib` would be extracted. With this option the linker first tries to extract the symbol from the first library `a.lib`.

Note that routines in `b.lib` that call other routines that are present in both `a.lib` and `b.lib` are now also resolved from `a.lib`.

6.4.1 How the Linker Searches Libraries

System libraries

You can specify the location of system libraries in several ways. The linker searches the specified locations in the following order:

1. The linker first looks in the directories that are specified in the **Build Options** page of the *Project Options* dialog (equivalent to the command line option **--library-directory**). If you specify the option **--ignore-default-library-path**, the linker stops searching after this step.
2. When the linker did not find the library (because it is not in the specified library directory or because no directory is specified), it looks in the path(s) specified in the environment variable `LIBMB`.
3. When the linker did not find the library, it tries the default `lib` directory relative to the installation directory (or a processor specific sub-directory).

User library

If you use your own library, the linker searches the library in the current directory only.

6.4.2 How the Linker Extracts Objects from Libraries

A library built with the TASKING librarian **tlb** always contains an index part at the beginning of the library. The linker scans this index while searching for unresolved externals. However, to keep the index as small as possible, only the defined symbols of the library members are recorded in this area.

When the linker finds a symbol that matches an unresolved external, the corresponding object file is extracted from the library and is processed. After processing the object file, the remaining library index is searched. If after a complete search of the library unresolved externals are introduced, the library index will be scanned again. After all files and libraries are processed, and there are still unresolved externals and you did not specify the linker option **--no-rescan**, all libraries are rescanned again. This way you do not have to worry about the library order on the command line and the order of the object files in the libraries. However, this rescanning does not work for 'weak symbols'. If you use a weak symbol construction, like `printf`, in an object file or your own library, you must position this object/library before the C library.

The **--verbose** option shows how libraries have been searched and which objects have been extracted.

Resolving symbols

If you are linking from libraries, only the objects that contain symbols to which you refer, are extracted from the library. This implies that if you invoke the linker like:

```
lkmb mylib.lib
```

nothing is linked and no output file will be produced, because there are no unresolved symbols when the linker searches through `mylib.lib`.

It is possible to force a symbol as external (unresolved symbol) with the option **--extern (-e)**:

```
lkmb -e main mylib.lib
```

In this case the linker searches for the symbol `main` in the library and (if found) extracts the object that contains `main`. If this module contains new unresolved symbols, the linker looks again in `mylib.lib`. This process repeats until no new unresolved symbols are found.

6.5 Incremental Linking

With the TASKING linker it is possible to link *incrementally*. Incremental linking means that you link some, but not all `.obj` modules to a relocatable object file `.out`. In this case the linker does not perform the locating phase. With the second invocation, you specify both new `.obj` files as the `.out` file you had created with the first invocation.



Incremental linking is only possible on the command line.

```
lkmb -dmb.lsl -r test1.obj -otest.out
lkmb -dmb.lsl test2.obj test.out
```

This links the file `test1.obj` and generates the file `test.out`. This file is used again and linked together with `test2.obj` to create the file `test.abs` (the default name if no output filename is given in the default ELF/DWARF 2 format).

With incremental linking it is normal to have unresolved references in the output file until all `.obj` files are linked and the final `.out` or `.abs` file has been reached. The option **--incremental (-r)** for incremental linking also suppresses warnings and errors because of unresolved symbols.

6.6 Linking the C Startup Code

You need the run-time startup code to build an executable application. The default startup code consists of the following components:

- *Initialization code*. This code is executed when the program is initiated and before the function `main()` is called.
- *Exit code*. This controls the closedown of the application after the program's main function terminates.

The startup code is part of the C library, and the source is present in the file `cstart.c` in the directory `lib\src`. If the default run-time startup code does not match your configuration, you need to modify the startup code accordingly.

To link the default startup code

1. From the **Project** menu, select **Project Options...**

The Project Options dialog box appears.

2. Expand the **Linker** entry and select **Libraries**.
3. Select **Link default C libraries**.

To use your own startup code

1. Make a copy (backup) of the file `lib\src\cstart.c`, for example `project_cstart.c`, and place it in your project directory.
2. From the **Project** menu, select **Add Existing to Project...** and add the file `project_cstart.c` to your project.
3. Modify the file `project_cstart.c` to match your configuration.

Altium Designer adds the startup code to your project, before the libraries. So, the linker finds your startup code first.

6.7 Importing Binary Files

With the TASKING linker it is possible to add a binary file to your absolute output file. In an embedded application you usually do not have a file system where you can get your data from. With the [linker option `--import-object`](#) you can add raw data to your application. This makes it possible for example to display images on a device or play audio. The linker puts the raw data from the binary file in a section. The section is aligned on a 4-byte boundary. The section name is derived from the filename, in which dots are replaced by an underscore. So, when importing a file called `my.mp3`, a section with the name `my_mp3` is created. In your application you can refer to the created section by using linker labels.

For example:

```
#include <stdio.h>
extern __no_sdata char _lc_ub_my_mp3; /* linker labels */
extern __no_sdata char _lc_ue_my_mp3;
char* mp3 = &_lc_ub_my_mp3;

void main(void)
{
    int size = &_lc_ue_my_mp3 - &_lc_ub_my_mp3;
    int i;
    for (i=0;i<size;i++)
        putchar(mp3[i]);
}
```



Because the compiler does not know in which space the linker will locate the imported binary, you have to make sure the symbols refer to the same space in which the linker will place the imported binary. You do this by using the memory qualifier `__no_sdata`, otherwise the linker cannot bind your linker symbols.

Also note that if you want to use the export functionality of Altium Designer, the binary file has to be part of your project.

6.8 Linker Optimizations

During the linking and locating phase, the linker looks for opportunities to optimize the object code. Both code size and execution speed can be optimized.

To enable or disable optimizations

1. From the **Project** menu, select **Project Options...**

The Project Options dialog box appears.

2. Expand the **Linker** entry and select **Optimization**.

You can enable or disable the optimizations described below. The command line option for each optimization is given in brackets.



See also option `--optimize (-O)` in section 5.4, *Linker Options*, in Chapter *Tool Options* of the reference manual.

Delete unreferenced sections

(option `-Oc/-OC`)

This optimization removes unused sections from the resulting object file. Because debug information normally refers to all sections, the optimization has no effect until you compile your project without debug information or use linker option `--strip-debug` to remove the debug information.

First fit decreasing

(option `-OI/-OL`)

When the physical memory is fragmented or when address spaces are nested it may be possible that a given application cannot be located although the size of the available physical memory is larger than the sum of the section sizes. Enable the first-fit-decreasing optimization when this occurs and re-link your application.

The linker's default behavior is to place sections in the order that is specified in the LSL file (that is, working from low to high memory addresses or vice versa). This also applies to sections within an unrestricted group. If a memory range is partially filled and a section must be located that is larger than the remainder of this range, then the section and all subsequent sections are placed in a next memory range. As a result of this gaps occur at the end of a memory range.

When the first-fit-decreasing optimization is enabled the linker will first place the largest sections in the smallest memory ranges that can contain the section. Small sections are located last and can likely fit in the remaining gaps.

Copy table compression

(option `-Ot/-OT`)

The startup code initializes the application's data areas. The information about which memory addresses should be zeroed and which memory ranges should be copied from ROM to RAM is stored in the copy table.

When this optimization is enabled the linker will try to locate sections in such a way that the copy table is as small as possible thereby reducing the application's ROM image.

Delete duplicate code

(option `-Ox/-OX`)

Delete duplicate constant data

(option `-Oy/-OY`)

These two optimizations remove code and constant data that is defined more than once, from the resulting object file.

Compress ROM sections of copy table items

(option `-Oz/-OZ`)

Reduces the size of the application's ROM image by compressing the ROM image of initialized data sections. At application startup time the ROM image is decompressed and copied to RAM.

Reduce size of code sections

(option `-Od/-OD`)

Reduces the size of the application's ROM code by modifying instructions with immediate operands or relative offsets. When this optimization is enabled the link time will increase substantially.

6.9 Controlling the Linker with a Script

With the options on the command line you can control the linker's behavior to a certain degree. From Altium Designer it is also possible to determine where your sections will be located, how much memory is available, which sorts of memory are available, and so on. Altium Designer passes these locating directions to the linker via a script file. If you want even more control over the locating process you can supply your own script.

The language for the script is called the *Linker Script Language*, or shortly LSL. You can specify the script file to the linker, which reads it and locates your application exactly as defined in the script. If you do not specify your own script file, the linker always reads a standard script file which is supplied with the toolset.

6.9.1 Purpose of the Linker Script Language

The Linker Script Language (LSL) serves three purposes:

1. It provides the linker with a definition of the target's core architecture. This definition is supplied with the toolset.
2. It provides the linker with a specification of the memory attached to the target processor.
3. It provides the linker with information on how your application should be located in memory. This gives you, for example, the possibility to create overlaying sections.

The linker accepts multiple LSL files. You can use the specifications of the core architectures that Altium has supplied in the `include.lsl` directory. Do not change these files.

If you use a different memory layout than described in the LSL file supplied for the target core, you must specify this in a separate LSL file and pass both the LSL file that describes the core architecture and your LSL file that contains the memory specification to the linker. Next you may want to specify how sections should be located and overlaid. You can do this in the same file or in another LSL file.

LSL has its own syntax. In addition, you can use the standard C preprocessor keywords, such as `#include` and `#define`, because the linker sends the script file first to the C preprocessor before it starts interpreting the script.



The complete syntax is described in Chapter 8, [Linker Script Language](#), in the reference manual.

6.9.2 Altium Designer and LSL

In Altium Designer you can specify the size of the stack and heap; the physical memory attached to the processor; identify that particular address ranges are reserved; and specify which sections are located where in memory. Altium Designer translates your input into an LSL file that is stored in the project directory under the name `project.lsl` and passes this file to the linker.

If you want to learn more about LSL you can inspect the generated file `project.lsl`.

To change the LSL settings

1. From the **Project** menu, select **Project Options...**

The Project Options dialog box appears.

2. Open the **Configure Memory** tab.
3. Make your changes to the memory layout.
4. Open the **Sections/Reserved Areas** tab.
5. Make your changes to the list of sections and/or reserved areas.

Each time you close the *Project Options* dialog the file `project.lsl` is updated and you can immediately see how your settings are encoded in LSL.

Note that Altium Designer supports ChromaCoding (applying color coding to text) and template expansion when you edit LSL files.

6.9.3 Structure of a Linker Script File

A script file consists of several definitions. The definitions can appear in any order.

The architecture definition (required)

In essence an *architecture definition* describes how the linker should convert logical addresses into physical addresses for a given type of core. If the core supports multiple address spaces, then for each space the linker must know how to perform this conversion. In this context a physical address is an offset on a given internal or external bus. Additionally the architecture definition contains information about items such as the (hardware) stack and the vector table.

This specification is normally written by Altium. Altium supplies LSL files in the `include.lsl` directory. The architecture definition of the LSL file should not be changed by you unless you also modify the core's hardware architecture. If the LSL file describes a multi-core system an architecture definition must be available for each different type of core.

The linker uses the architecture name in the LSL file to identify the target. For example, the default library search path can be different for each core architecture.

The derivative definition

The *derivative definition* describes the configuration of the internal (on-chip) bus and memory system. Basically it tells the linker how to convert offsets on the buses specified in the architecture definition into offsets in internal memory. Microcontrollers and DSPs often have internal memory and I/O sub-systems apart from one or more cores. The design of such a chip is called a *derivative*.

When you design an FPGA together with a PCB, the components on the FPGA become part of the board design and there is no need to distinguish between internal and external memory. For this reason you probably do not need to work with derivative definitions at all. There are, however, two situations where derivative definitions are useful:

1. When you re-use an FPGA design for several board designs it may be practical to write a derivative definition for the FPGA design and include it in the project LSL file.
2. When you want to use multiple cores of the same type, you must instantiate the cores in a derivative definition, since the linker automatically instantiates only a single core for an unused architecture.

The processor definition

The *processor definition* describes an instance of a derivative. A processor definition is only needed in a multi-processor embedded system. It allows you to define multiple processors of the same type.

If for a derivative 'A' no processor is defined in the LSL file, the linker automatically creates a processor named 'A' of derivative 'A'. This is why for single-processor applications it is enough to specify the derivative in the LSL file.

The memory and bus definitions (optional)

Memory and bus definitions are used within the context of a derivative definition to specify internal memory and on-chip buses. In the context of a board specification the memory and bus definitions are used to define external (off-chip) memory and buses. Given the above definitions the linker can convert a logical address into an offset into an on-chip or off-chip memory device.

The board specification

The processor definition and memory and bus definitions together form a *board specification*. LSL provides language constructs to easily describe single-core and heterogeneous or homogeneous multi-core systems. The board specification describes all characteristics of your target board's system buses, memory devices, I/O sub-systems, and cores that are of interest to the linker. Based on the information provided in the board specification the linker can for each core:

- convert a logical address to an offset within a memory device
- locate sections in physical memory
- maintain an overall view of the used and free physical memory within the whole system while locating

The section layout definition (optional)

The optional *section layout definition* enables you to exactly control where input sections are located. Features are provided such as: the ability to place sections at a given address, to place sections in a given order, and to overlay code and/or data sections.

Example: Skeleton of a Linker Script File

A linker script file that defines a derivative "X" based on the MB architecture, its external memory and how sections are located in memory, may have the following skeleton:

```
architecture MB
{
    // Specification of the MB core architecture.
    // Written by Altium.
}
```

```
derivative X           // derivative name is arbitrary
{
    // Specification of the derivative.
    // Written by Altium.
    core MB             // always specify the core
    {
        architecture = MB;
    }

    bus addr_bus        // address bus
    {
        // maps to addr_bus in "MB" core
    }

    // internal memory
}

processor procl        // processor name is arbitrary
{
    derivative = X;

    // You can omit this part, except if you use a
    // multi-core system.
}

memory ext_name
{
    // external memory definition
}

section_layout procl:MB:main // section layout
{
    // section placement statements

    // sections are located in address space 'main'
    // of core 'MB' of processor 'procl'
}
```

6.9.4 The Architecture Definition

Although you will probably not need to program the architecture definition (unless you are building your own processor core) it helps to understand the Linker Script Language and how the definitions are interrelated.

Within an *architecture definition* the characteristics of a target processor core that are important for the linking process are defined. These include:

- space definitions: the logical address spaces and their properties
- bus definitions: the I/O buses of the core architecture
- mappings: the address translations between logical address spaces, the connections between logical address spaces and buses and the address translations between buses

Address spaces

A logical address space is a memory range for which the core has a separate way to encode an address into instructions. Most microcontrollers and DSPs support multiple address spaces. For example, separate spaces for code and data. Normally, the size of an address space is 2^N , with N the number of bits used to encode the addresses.

The relation of an address space with another address space can be one of the following:

- one space is a subset of the other. These are often used for "small" absolute, and relative addressing.
- the addresses in the two address spaces represent different locations so they do not overlap. This means the core must have separate sets of address lines for the address spaces. For example, in Harvard architectures we can identify at least a code and a data memory space.

Address spaces (even nested) can have different minimal addressable units (MAU), alignment restrictions, and page sizes. All address spaces have a number that identifies the logical space (id). The following table lists the different address spaces.

Space	Id	MAU	Description
main	1	8	Address space

Table 6-5: MicroBlaze address spaces

The MicroBlaze architecture in LSL notation

The best way to program the architecture definition, is to start with a drawing. The figure below shows a part of the MicroBlaze architecture MB:

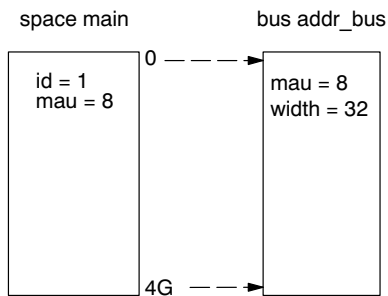


Figure 6-2: Scheme of the MB architecture

The figure shows one address spaces called `main`. The address space has attributes like a number that identifies the logical space (id), a MAU and an alignment. In LSL notation the definition of this address space looks as follows:

```

space main
{
    id    = 1;
    mau   = 8;
    align = 4;
    map (size=4G, dest=bus:addr_bus);
}
  
```

The keyword `map` corresponds with the arrows in the drawing. You can map:

- address space => address space (not shown in the drawing)
- address space => bus
- memory => bus (not shown in the drawing)
- bus => bus (not shown in the drawing)

Next the internal bus named `addr_bus` must be defined in LSL:

```

bus addr_bus
{
    mau = 8;
    width = 32; // there are 32 data lines on the bus
}
  
```

This completes the LSL code in the architecture definition. Note that all code above goes into the architecture definition, thus between:

```

architecture MB
{
    All code above goes here.
}
  
```

6.9.5 The Derivative Definition

When you are building a personal ASIC (using FPGAs) you will probably not need to program the derivative definition (unless you are using multiple cores), but the description below helps to understand the Linker Script Language and how the definitions are interrelated.

A *derivative* is the design of a processor, as implemented on an FPGA. It comprises one or more cores and on-chip memory. The derivative definition includes:

- core definition: an instance of a core architecture
- bus definition: the I/O buses of the core architecture
- memory definitions: internal (or on-chip) memory

Core

Each derivative must have at least one core and each core must have a specification of its core architecture. This core architecture must be defined somewhere in the LSL file(s).

```
core MB
{
    architecture = MB;
}
```

Bus

Each derivative can contain a bus definition for connecting external memory. In this example, the bus `addr_bus` maps to the bus `addr_bus` defined in the architecture definition of core MB:

```
bus addr_bus
{
    mau = 8;
    width = 32;
    map (dest=bus:MB:addr_bus, dest_offset=0, size=4G);
}
```

Memory

Memory is usually described in a separate memory definition, but you can specify on-chip memory for a derivative. For example:

```
memory internal_code_rom
{
    type = rom;
    size = 2k;
    mau = 8;
    map(dest = bus:addr_bus, size=2k,
        dest_offset = 0x00100000); // src_offset is zero by default)
}
```

This completes the LSL code in the derivative definition. Note that all code above goes into the derivative definition, thus between:

```
derivative X // name of derivative
{
    All code above goes here.
}
```



If you create a derivative and you want to use Altium Designer to select sections, the derivative must be called "MB" for the MicroBlaze, since Altium Designer uses this name in the generated LSL file. If you want to specify memory in Altium Designer, the custom derivative must contain the bus "addr_bus" for the same reasons.

6.9.6 The Processor Definition: Using Multi-Processor Systems

The processor definition is only needed when you write an LSL file for a multi-processor embedded system. The processor definition explicitly instantiates a derivative, allowing multiple processors of the same type.

```
processor proc_name
{
    derivative = deriv_name;
}
```

If no processor definition is available that instantiates a derivative, a processor is created with the same name as the derivative.

6.9.7 The Memory Definition

Once the core architecture is defined in LSL, you may want to extend the processor with memory. You need to specify the location and size of the physical external memory devices in the target system.

The principle is the same as defining the core's architecture but now you need to fill the memory definition:

```
memory name
{
    memory definitions.
}
```

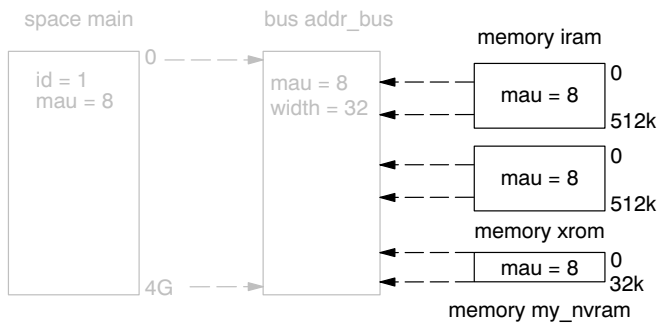


Figure 6-3: Adding external memory to the MB architecture

Suppose your embedded system has 512kB of internal RAM, named `iram`, 32kB of external NVRAM, named `my_nvram` and 512kB of external ROM, named `xrom` (see figure above.) All memories are connected to the bus `addr_bus`. In LSL this looks like follows:

```
memory iram
{
    mau = 8;
    type = ram;
    size = 512k;
    map ( size = 512k, dest_offset=0, dest=bus:X:addr_bus);
}

memory xrom
{
    mau = 8;
    type = rom;
    size = 512k;
    map ( size = 512k, dest_offset=512k, dest=bus:X:addr_bus);
}
```

```
memory my_nvram
{
    mau = 8;
    type = ram;
    size = 32k;
    map ( size = 32k, dest_offset=1M, dest=bus:X:addr_bus);
}
```



If you use a different memory layout than described in the LSL file supplied for the target core, you can specify this in Altium Designer or you can specify this in a separate LSL file and pass both the LSL file that describes the core architecture and your LSL file that contains the memory specification to the linker.

In order to bypass the default memory setup, your memory definition file must contain a `#define __MEMORY`, and you must specify this file *before* the core architecture LSL file.

Adding memory using Altium Designer

1. From the **Project** menu, select **Project Options...**

The Project Options dialog box appears.

2. Open the **Configure Memory** tab.
3. Disable the check box **Automatically import when compiling FPGA project**.
4. Right-click in the tab and select **Add Memory...**

The Processor Memory Definition dialog box appears.

5. Specify a new physical memory device, for example `my_nvram`.

6.9.8 The Section Layout Definition: Locating Sections

Once you have defined the internal core architecture and optional memory, you can actually define where your application must be located in the physical memory.

During compilation, the compiler divides the application into sections. Sections have a name, an indication (section type) in which address space it should be located and attributes like writable or read-only.

In the section layout definition you can exactly define how input sections are placed in address spaces, relative to each other, and what their absolute run-time and load-time addresses will be.

Example: section propagation through the toolset

To illustrate section placement, the following example of a C program is used. The program prints the number of times it has been executed.

```
#define BATTERY_BACKUP_TAG 0xa5f0
#include <stdio.h>

int uninitialized_data;
int initialized_data = 1;

#pragma section non_volatile
__no_sdata int battery_backup_tag;
__no_sdata int battery_backup_invok;
#pragma endsection
```

```

void main (void)
{
    if (battery_backup_tag != BATTERY_BACKUP_TAG )
    {
        // battery back-upped memory area contains invalid data
        // initialize the memory
        battery_backup_tag = BATTERY_BACKUP_TAG;
        battery_backup_invok = 0;
    }
    printf( "This application has been invoked %d times\n",
           battery_backup_invok++);
}

```

The compiler assigns names and attributes to sections. With the `#pragma section` and `#pragma endsection` the compiler's default section naming convention is overruled and a section with the name `non_volatile` appended is defined. In this section the battery back-upped data is stored.

By default the compiler creates the section `.sbss` to store uninitialized data objects. With the `__no_sdata` qualifier this is `.bss`. This section name tells the linker to locate the section in address space `main` and that the section content should be filled with zeros at startup.

As a result of the `#pragma section non_volatile`, the data objects between the pragma pair are placed in `.bss.non_volatile`. Note that `.bss` sections are cleared at startup. However, battery back-upped sections should not be cleared and therefore we will change this section attribute using the LSL.

Section placement

The number of invocations of the example program should be saved in non-volatile (battery back-upped) memory. This is the memory `my_nvram` from the example in section 6.9.7, [The Memory Definition](#).

To control the locating of sections, you need to write one or more section definitions in the LSL file. At least one for each address space where you want to change the default behavior of the linker. In our example, we need to locate sections in the address space `main`:

```

section_layout ::main
{
    Section placement statements
}

```

To locate sections, you must create a group in which you select sections from your program. For the battery back-up example, we need to define one group, which contains the section `.bss.non_volatile`. All other sections are located using the defaults specified in the architecture definition. Section `.bss.non_volatile` should be placed in non-volatile ram. To achieve this, the run address refers to our non-volatile memory called `my_nvram`. Furthermore, the section should not be cleared and therefore the attribute `s` (scratch) is assigned to the group:

```

group ( ordered, run_addr = mem:my_nvram, attributes = rws )
{
    select ".bss.non_volatile";
}

```

Section placement from Altium Designer

To specify the above settings using Altium Designer, follow these steps:

1. From the **Project** menu, select **Project Options...**

The Project Options dialog box appears.

2. Open the **Sections/Reserved Areas** tab.

3. Click **Add Section**.

The Section dialog box appears.

4. In the **Name** field, enter `.bss.non_volatile`

5. In the **Location** field, enter `mem:my_nvram`

This completes the LSL file for the sample architecture and sample program. You can now invoke the linker with this file and the sample program to obtain an application that works for this architecture.



For a complete description of the Linker Script Language, refer to Chapter 8, [Linker Script Language](#), in the reference manual.

6.10 Linker Labels

The linker creates labels that you can use to refer to from within the application software. Some of these labels are real labels at the beginning or the end of a section. Other labels have a second function, these labels are used to address generated data in the locating phase. The data is only generated if the label is used.

Linker labels are labels starting with `_lc_`. The linker assigns addresses to the following labels when they are referenced:

Label	Description
<code>_lc_ub_name</code> <code>_lc_b_name</code>	Begin of section <i>name</i> . Also used to mark the begin of the stack or heap or copy table.
<code>_lc_ue_name</code> <code>_lc_e_name</code>	End of section <i>name</i> . Also used to mark the end of the stack or heap.
<code>_lc_cb_name</code>	Start address of an overlay section in ROM.
<code>_lc_ce_name</code>	End address of an overlay section in ROM.
<code>_lc_gb_name</code>	Begin of group <i>name</i> . This label appears in the output file even if no reference to the label exists in the input file.
<code>_lc_ge_name</code>	End of group <i>name</i> . This label appears in the output file even if no reference to the label exists in the input file.

Table 6-6: Linker labels

The linker only allocates space for the stack and/or heap when a reference to either of the section labels exists in one of the input object files.



If you want to use linker labels in your C source for sections that have a dot (.) in the name, you have to replace all dots by underscores.



See also section 8.9.4, [Creating Symbols](#), in Chapter 8, [Linker Script Language](#) of the reference manual.

Example: refer to a label with section name with dots from C

Suppose a section has the name `.text`. When you want to refer to the begin of this section you have to replace all dots in the section name by underscores:

```
#include <stdio.h>
extern __no_sdata void *_lc_ub__text;

int main(void)
{
    printf("The section .text is located at %X\n",
        &_lc_ub__text);
}
```


Example: refer to the stack

Suppose in an LSL file a stack section is defined with the name "stack" (with the keyword **stack**). You can refer to the begin and end of the stack from your C source as follows:

```
#include <stdio.h>
extern char _lc_ub_stack[];
extern char _lc_ue_stack[];
void main()
{
    printf( "Size of stack is %d\n",
           _lc_ub_stack - _lc_ue_stack );
    /* stack grows from high to low */
}
```

From assembly you can refer to the end of the stack with:

```
.extern _lc_ue_stack    ; end of stack
```

6.11 Generating a Map File

The map file is an additional output file that contains information about the location of sections and symbols. You can customize the type of information that should be included in the map file.

To generate a map file

1. From the **Project** menu, select **Project Options...**
The Project Options dialog box appears.
2. Expand the **Linker** entry and select **Map File**.
3. Select **Generate a memory map file (.map)**
4. (Optional) Enable the options to include that information in the map file.

Example on the command line (Windows Command Prompt)

```
lktarget -M test.obj
```

With this command the map file `test.map` is created.



See section 6.2, [Linker Map File Format](#), in Chapter *List File Formats* of the reference manual for an explanation of the format of the map file.

Linker option `--map-file (-M)` (Generate task related map file)

Linker option `--map-file-format (-m)` (Map file formatting)

6.12 Linker Error Messages

The linker produces error messages of the following types:

F Fatal errors

After a fatal error the linker immediately aborts the link/locate process.

E Errors

Errors are reported, but the linker continues linking and locating. No output files are produced unless you have set the [linker option `--keep-output-files`](#).

W Warnings

Warning messages do not result into an erroneous output file. They are meant to draw your attention to assumptions of the linker for a situation which may not be correct. You can control warnings in the **Linker » Diagnostics** page of the **Project » Project Options...** menu ([linker option `--no-warnings`](#)).

I Information

Verbose information messages do not indicate an error but tell something about a process or the state of the linker. To see verbose information, use the [linker option `--verbose`](#).

S System errors

System errors occur when internal consistency checks fail and should never occur. When you still receive the system error message

```
S6##: message
```

please report the error number and as many details as possible about the context in which the error occurred.

Display detailed information on diagnostics

1. From the **View** menu, select **Workspace Panels » System » Messages**.

The Messages panel appears.

2. In the **Messages** panel, right-click on the message you want more information on.

A popup menu appears.

3. Select **More Info**.

A Message Info box appears with additional information.

On the command line you can use the linker option **--diag** you can see an explanation of a diagnostic message:

```
lktarget --diag=[format:]{all | number,...}
```



See [linker option --diag](#) in section 5.4, *Linker Options* in Chapter *Tool Options* of the reference manual.



7 Using the Utilities

Summary

This chapter describes the utilities that are delivered with the product.

7.1 Introduction

The TASKING toolset comes with a number of utilities that are only available as command line tools.

cctarget	A control program. The control program invokes all tools in the toolset and lets you quickly generate an absolute object file from C and/or assembly source input files.
tmk	A utility program to maintain, update, and reconstruct groups of programs. The make utility looks whether files are out of date, rebuilds them and determines which other files as a consequence also need to be rebuilt.
tlb	A librarian. With this utility you create and maintain library files with relocatable object modules (.obj) generated by the assembler.

7.2 Control Program

The control program is a tool that invokes all tools in the toolset for you. It provides a quick and easy way to generate the final absolute object file out of your C sources without the need to invoke the compiler, assembler and linker manually.

7.2.1 Calling the Control Program

You can only call the control program from the command line. The invocation syntax is:

```
cctarget [ [option]... [file]...  ]...
```

where, *target* is the target you are building for.

Recognized input files

The control program recognizes the following input files:

- Files with a `.cc`, `.cxx` or `.cpp` suffix are interpreted as C++ source programs and are passed to the C++ compiler.
- Files with a `.c` suffix are interpreted as C source programs and are passed to the C compiler.
- Files with a `.asm` suffix are interpreted as hand-written assembly source files which have to be passed to the assembler.
- Files with a `.src` suffix are interpreted as compiled assembly source files. They are directly passed to the assembler.
- Files with a `.lib` suffix are interpreted as library files and are passed to the linker.
- Files with a `.obj` suffix are interpreted as object files and are passed to the linker.
- Files with a `.out` suffix are interpreted as linked object files and are passed to the locating phase of the linker. The linker accepts only one `.out` file in the invocation.
- An argument with a `.lsl` suffix is interpreted as a linker script file and is passed to the linker.

Options

The control program accepts several command line options. If you specify an unknown option to the control program, the control program looks if it is an option for a specific tool. If so, it passes the option directly to the tool. However, for directly passing an option to the C++ compiler, C compiler, assembler or linker, it is recommended to use the control program options **--pass-c++**, **--pass-c**, **--pass-assembler**, **--pass-linker**.

Example with verbose output

```
ccmb -v test.c
```

The control program calls all tools in the toolset and generates the absolute object file `test.abs`. With option **--verbose (-v)** you can see how the control program calls the tools:

```
+ path\cmb -o cc1692a.src test.c
+ path\asmb -o cc1692b.obj cc1692a.src
+ path\lkmb cc1692b.obj -o test.abs -dmb.lsl -M -lcmba -lfpmba -lrtmba
```

The control program produces unique filenames for intermediate steps in the compilation process (such as `cc1692a.src` and `cc1692b.obj` in the example above) which are removed afterwards, unless you specify command line option **--keep-temporary-files (-t)**.

Example with argument passing to a tool

```
ccmb -Wc-Oc test.c
```

The option **-Oc** is directly passed to the compiler.

7.2.2 Overview of Control Program Options

The following control program options are available:

Description	Option
Information	
Display invocation options	<code>--help / -?</code>
Display version header	<code>--version / -V</code>
Show description of diagnostics	<code>--diag=[fmt:]{all nr}</code>
Check the source, but do not generate code	<code>--check</code>
Profiling	<code>--profile=[flags] / -p</code>
Verbose output	<code>--verbose / -v</code>
Verbose output and suppress execution	<code>--dry-run / -n</code>
Suppress all or specific warnings	<code>--no-warnings=[num] / -w</code>
Treat warnings as errors	<code>--warnings-as-errors</code>
Show C and assembly warnings for C++ compilations	<code>--show-c++-warnings</code>
C Language	
ISO C standard 90 or 99 (default: 99)	<code>--iso={90 99}</code>
Treat external definitions as "static"	<code>--static</code>
Single precision floating-point	<code>--no-double / -F</code>
C++ Language	
Treat C++ files as C files	<code>--force-c</code>
Force C++ compilation and linking	<code>--force-c++</code>
Force invocation of C++ muncher	<code>--force-munch</code>
Enable C++ exception handling	<code>--exceptions</code>
C++ instantiation mode	<code>--instantiate=mode</code>
Disable automatic C++ instantiation	<code>--no-auto-instantiation</code>
Enable C++ I/O streams	<code>--io-streams</code>
Preprocessing	
Define preprocessor <i>macro</i>	<code>--define=macro[=def] / -D</code>
Remove preprocessor <i>macro</i>	<code>--undefine=macro / -U</code>
Store the C compiler preprocess output (<i>file.pre</i>)	<code>--preprocess=[flags] / -E</code>
Force full compilation	<code>--no-preprocessing-only</code>
Code generation	
Use hardware barrel shifter, divider, floating-point and/or multiplier	<code>--use-hardware=flag,...</code>
Generate symbolic debug information	<code>--debug-info / -g</code>
Pass arguments	
Pass arguments directly to the:	
C++ compiler	<code>--pass-c++=option</code>
C compiler	<code>--pass-c=option</code>
Assembler	<code>--pass-assembler=option</code>
Linker	<code>--pass-linker=option</code>
Libraries	
Add library directory	<code>--library-directory=dir / -L</code>
Add library	<code>--library=lib / -l</code>
Ignore the default search path for libraries	<code>--ignore-default-library-path</code>
Do not include default list of libraries	<code>--no-default-libraries</code>

Description	Option
Use trapped floating-point library	<code>--fp-trap</code>
Input files	
Specify linker script file	<code>--lsl-file=file / -d</code>
Read options from file	<code>--option-file=file / -f</code>
Add include directory	<code>--include-directory=dir / -I</code>
Output files	
Redirect diagnostic messages to a file	<code>--error-file</code>
Select final output file:	
intermediate C file(s)	<code>--create=intermediate-c</code>
relocatable output file	<code>--create=relocatable</code>
MIL file(s)	<code>--create=mil</code>
object file(s)	<code>--create=object</code>
assembly file(s)	<code>--create=assembly</code>
Specify linker output format (IEEE, ELF, IHEX, SREC)	<code>--format=type</code>
Set the address size for linker IHEX/SREC files	<code>--address-size=n</code>
Keep output file(s) after errors	<code>--keep-output-files / -k</code>
Generate assembler list files	<code>--list-files[=name]</code>
Do not generate linker map file	<code>--no-map-file</code>
Specify name of output file	<code>--output=file / -o</code>
Do not delete intermediate (temporary) files	<code>--keep-temporary-files / -t</code>

Table 7-1: Overview of control program options



For a complete list and description of all control program options, see section 5.5, [Control Program Options](#), in Chapter *Tool Options* of the reference manual.

7.3 Make Utility

If you are working with large quantities of files, or if you need to build several targets, it is rather time-consuming to call the individual tools to compile, assemble, link and locate all your files.

You save already a lot of typing if you use the control program **cctarget** and define an options file. You can even create a batch file or script that invokes the control program for each target you want to create. But with these methods all files are completely compiled, assembled and linked to obtain the target file, even if you changed just one C source. This may demand a lot of (CPU) time on your host.

The make utility **tmk** is a tool to maintain, update, and reconstruct groups of programs. The make utility looks which files are out-of-date and only recreates these files to obtain the updated target.

Make process

In order to build a target, the make utility needs the following input:

- the target it should build, specified as argument on the command line
- the rules to build the target, stored in a file usually called `makefile`



In addition, the make utility also reads the file `tmk.mk` which contains predefined rules and macros. See section 7.3.3, [Writing a Makefile](#).

The makefile contains the relationships among your files (called *dependencies*) and the commands that are necessary to create each of the files (called *rules*). Typically, the absolute object file (`.abs`) is updated when one of its dependencies has changed. The absolute file depends on `.obj` files and libraries that must be linked together. The `.obj` files on their turn depend on `.src` files that must be assembled and finally, `.src` files depend on the C source files (`.c`) that must be compiled. In the makefile makefile this looks like:

```
test.src : test.c                # dependency
        cmb test.c              # rule

test.obj : test.src
        asmb test.src

test.abs : test.obj
        lkmb test.obj -o test.abs -dmb.lsl -M -lcmba -lfpmba -lrtmba
```

You can use any command that is valid on the command line as a rule in the makefile. So, rules are not restricted to invocation of the toolset.

Example

To build the target `test.abs`, call **tmk** with one of the following lines:

```
tmk test.abs

tmk -f mymake.mak test.abs
```



By default the make utility reads `makefile` so you do not need to specify it on the command line. If you want to use another name for the makefile, use the [option `-f my_makefile`](#).



If you do not specify a target, **tmk** uses the first target defined in the makefile. In this example it would build `test.src` instead of `test.abs`.

The make utility now tries to build `test.abs` based on the makefile and performs the following steps:

1. From the makefile the make utility reads that `test.abs` depends on `test.obj`.
2. If `test.obj` does not exist or is out-of-date, the make utility first tries to build this file and reads from the makefile that `test.obj` depends on `test.src`.
3. If `test.src` does exist, the make utility now creates `test.obj` by executing the rule for it: `cmb test.src`.
4. There are no other files necessary to create `test.abs` so the make utility now can use `test.obj` to create `test.abs` by executing the rule `lkmb test.obj -o test.abs`

The make utility has now built `test.abs` but it only used the assembler to update `test.obj` and the linker to create `test.abs`.

If you compare this to the control program:

```
ccmb test.c
```

This invocation has the same effect but now *all* files are recompiled (assembled, linked and located).

7.3.1 Calling the Make Utility

You can only call the make utility from the command line. The invocation syntax is:

```
tmk [ [option]... [target]... [macro=def]... ]
```

For example:

```
tmk test.abs
```

target You can specify any target that is defined in the makefile. A target can also be one of the intermediate files specified in the makefile.

macro=def Macro definition. This definition remains fixed for the **tmk** invocation. It overrides any regular definitions for the specified macro within the makefiles and from the environment. It is inherited by subordinate **tmk**'s but act as an environment variable for these. That is, depending on the **-e** setting, it may be overridden by a makefile definition.

Exit status

tmk returns an exit status of 1 when it halts as a result of an error. Otherwise it returns an exit status of 0.

7.3.2 Overview of Make Utility Options

The following make utility options are available:

Description	Option
Information	
Display invocation options	-?
Display version header only	-V
Print makefile lines while being read	-D/-DD
Display time comparisons which indicate a target is out of date	-d/-dd
Verbose option: show commands without executing (dry run)	-n
Do not show commands before execution	-s
Do not build, only indicate whether target is up-to-date	-q
Input files	
Use <i>makefile</i> instead of the standard <i>makefile</i>	-f makefile
Change to directory before reading the makefile	-G path
Read options from <i>file</i>	-m file
Do not read the <code>tmk.mk</code> file	-r
Process	
Always rebuild target without checking whether it is out-of-date	-a
Run as a child process	-c
Environment variables override macro definitions	-e
Do not remove temporary files	-K
On error, only stop rebuilding current target	-k
Overrule the option -k (only stop building current target)	-S
Touch the target files instead of rebuilding them	-t
Treat <i>target</i> as if it has just been reconstructed	-W target

Description	Option
Error messages	
Redirect error messages and verbose messages to a file	-err file
Ignore error codes returned by commands	-i
Redirect messages to standard out instead of standard error	-w
Show extended error messages	-x

Table 7-2: Overview of control program options



For a complete list and description of all make utility options, see section 5.6, *Make Utility Options*, in Chapter *Tool Options* of the reference manual.

7.3.3 Writing a MakeFile

In addition to the standard makefile `makefile`, the make utility always reads the makefile `tmk.mk` before other inputs. This system makefile contains implicit rules and predefined macros that you can use in the makefile `makefile`.



With the option **-r** (Do not read the `tmk.mk` file) you can prevent the make utility from reading `tmk.mk`.

The default name of the makefile is `makefile` in the current directory. If you want to use other makefiles, use the option **-f my_makefile**.

The makefile can contain a mixture of:

- targets and dependencies
- rules
- macro definitions or functions
- comment lines
- include lines
- export lines

To continue a line on the next line, terminate it with a backslash (`\`):

```
# this comment line is continued\
on the next line
```

If a line must end with a backslash, add an empty macro.

```
# this comment line ends with a backslash \$(EMPTY)
# this is a new line
```

Targets and dependencies

The basis of the makefile is a set of targets, dependencies and rules. A target entry in the makefile has the following format:

```
target ... : [dependency ...] [; rule]
[rule]
...
```

Target lines must always start at the beginning of a line, leading white spaces (tabs or spaces) are not allowed. A target line consists of one or more targets, a semicolon and a set of files which are required to build the target (*dependencies*). The target itself can be one or more filenames or symbolic names:

```
all:                demo.abs final.abs

demo.abs final.abs:  test.obj demo.obj final.obj
```

You can now specify the target you want to build to the make utility. The following three invocations all have the same effect:

```
tmk
tmk all
tmk demo.abs final.abs
```

If you do *not* specify a target, the first target in the makefile (in this example `all`) is built. The target `all` depends on `demo.abs` and `final.abs` so the second and third invocation have the same effect and the files `demo.abs` and `final.abs` are built.

You can normally use colons to denote drive letters. The following works as intended:

```
c:foo.obj : a:foo.c
```

If a target is defined in more than one target line, the dependencies are added to form the target's complete dependency list:

```
all: demo.abs    # These two lines are equivalent with:
all: final.abs   # all: demo.abs final.abs
```

For target lines, macros and functions are expanded at the moment they are read by the make utility. Normally macros are not expanded until the moment they are actually used.

Special targets

There are a number of special targets. Their names begin with a period.

Target	Description
.DEFAULT	If you call the make utility with a target that has no definition in the makefile, this target is built.
.DONE	When the make utility has finished building the specified targets, it continues with the rules following this target.
.IGNORE	Non-zero error codes returned from commands are ignored. Encountering this in a makefile is the same as specifying the option <code>-i</code> on the command line.
.INIT	The rules following this target are executed before any other targets are built.
.PRECIOUS	Dependency files mentioned for this target are never removed. Normally, if a command in a rule returns an error or when the target construction is interrupted, the make utility removes that target file.
.SILENT	Commands are not echoed before executing them. Encountering this in a makefile is the same as specifying the option <code>-s</code> on the command line.
.SUFFIXES	This target specifies a list of file extensions. Instead of building a completely specified target, you now can build a target that has a certain file extension. Implicit rules to build files with a number of extensions are included in the system makefile <code>tmk.mk</code> . If you specify this target with dependencies, these are added to the existing <code>.SUFFIXES</code> target in <code>tmk.mk</code> . If you specify this target without dependencies, the existing list is cleared.

Rules

A line with leading white space (tabs or spaces) is considered as a rule and associated with the most recently preceding dependency line. A *rule* is a line with commands that are executed to build the associated target. A target-dependency line can be followed by one or more rules.

```
final.src : final.c           # target and dependency
      move test.c final.c    # rule1
      cmb final.c            # rule2
```

You can precede a rule with one or more of the following characters:

@ does not echo the command line, except if `-n` is used.

- the make utility ignores the exit code of the command (ERRORLEVEL in MS-DOS). Normally the make utility stops if a non-zero exit code is returned. This is the same as specifying the option `-i` on the command line or specifying the special `.IGNORE` target.
- + The make utility uses a shell or `COMMAND.COM` to execute the command. If the '+' is not followed by a shell line, but the command is a DOS command or if redirection is used (`<`, `|`, `>`), the shell line is passed to `COMMAND.COM` anyway.

You can force **tmk** to execute multiple command lines in one shell environment. This is accomplished with the token combination `;\`. For example:

```
cd c:\Tasking\bin ;\
tmk -v
```

Note that the `;` must always directly be followed by the `\` token. Whitespace is not removed when it is at the end of the previous command line or when it is in front of the next command line. The use of the `;` as an operator for a command (like a semicolon `;` separated list with each item on one line) and the `\` as a layout tool is not supported, unless they are separated with whitespace.

Inline temporary files

The make utility can generate inline temporary files. If a line contains `<<LABEL` (no whitespaces!) then all subsequent lines are placed in a temporary file until the line `LABEL` is encountered. Next, `<<LABEL` is replaced by the name of the temporary file.

Example:

```
lkmb -o $@ -f <<EOF
    $(separate "\n" $(match .obj $!))
    $(separate "\n" $(match .lib $!))
    $(LKFLAGS)
EOF
```

The three lines between `<<EOF` and `EOF` are written to a temporary file (for example `mkce4c0a.tmp`), and the rule is rewritten as `lkmb -o $@ -f mkce4c0a.tmp`.

Suffix targets

Instead of specifying a specific target, you can also define a general target. A general target specifies the rules to generate a file with extension `.ex1` to a file with extension `.ex2`. For example:

```
.SUFFIXES: .c
.c.src    :
    cmb $<
```

Read this as: to build a file with extension `.src` out of a file with extension `.c`, call the compiler with `$<`. `$<` is a predefined macro that is replaced with the basename of the specified file. The special target `.SUFFIXES:` is followed by a list of file extensions of the files that are required to build the target.

Implicit rules

Implicit rules are stored in the system makefile `tmk.mk` and are intimately tied to the `.SUFFIXES` special target. Each dependency that follows the `.SUFFIXES` target, defines an extension to a filename which must be used to build another file. The implicit rules then define how to actually build one file from another. These files share a common basename, but have different extensions.

If the specified target on the command line is not defined in the makefile or has not rules in the makefile, the make utility looks if there is an implicit rule to build the target.

Example:

This makefile says that `prog.abs` depends on two files `prog.obj` and `sub.obj`, and that they in turn depend on their corresponding source files (`prog.c` and `sub.c`) along with the common file `inc.h`.

```
LIB = -lcmba -lfpmba -lrtmba # macro

prog.abs: prog.obj sub.obj
    lkmb prog.obj sub.obj $(LIB) -dmb.lsl -o prog.abs

prog.obj: prog.c inc.h
    cmb prog.c
    asmb prog.src

sub.obj: sub.c inc.h
    cmb sub.c
    asmb sub.src
```

The following makefile uses implicit rules (from `tmk.mk`) to perform the same job.

```
LKFLAGS = -lcmba -lfpmba -lrtmba # macro used by implicit rules
prog.abs: prog.obj sub.obj       # implicit rule used
prog.obj: prog.c inc.h           # implicit rule used
sub.obj: sub.c inc.h             # implicit rule used
```

Macro definitions

A *macro* is a symbol name that is replaced with its definition before the makefile is executed. Although the macro name can consist of lower case or upper case characters, upper case is an accepted convention. The general form of a macro definition is:

```
MACRO = text and more text
```

Spaces around the equal sign are not significant.

To use a macro, you must access its contents:

```
$(MACRO)      # you can read this as
${MACRO}      # the contents of macro MACRO
```

If the macro name is a single character, the parentheses are optional. Note that the expansion is done recursively, so the body of a macro may contain other macros. These macros are expanded when the macro is actually used, not at the point of definition:

```
FOOD = $(EAT) and $(DRINK)
EAT = meat and/or vegetables
DRINK = water
export FOOD
```

The macro `FOOD` is expanded as `meat and/or vegetables and water` at the moment it is used in the export line and the environment variable `FOOD` is set accordingly.

Predefined macros

Macro	Description
MAKE	Holds the value <code>tmk</code> . Any line which uses <code>MAKE</code> , temporarily overrides the option <code>-n</code> (Show commands without executing), just for the duration of the one line. This way you can test nested calls to <code>MAKE</code> with the option <code>-n</code> .
MAKEFLAGS	Holds the set of options provided to <code>tmk</code> (except for the options <code>-f</code> and <code>-d</code>). If this macro is exported to set the environment variable <code>MAKEFLAGS</code> , the set of options is processed before any command line options. You can pass this macro explicitly to nested <code>tmk</code> 's, but it is also available to these invocations as an environment variable.
PRODDIR	Holds the name of the directory where <code>tmk</code> is installed. You can use this macro to refer to files belonging to the product, for example a library source file. <code>DOPRINT = \$(PRODDIR)/lib/src/_doprint.c</code> When <code>tmk</code> is installed in the directory <code>c:/Tasking/bin</code> this line expands to: <code>DOPRINT = c:/Tasking/lib/src/_doprint.c</code>
SHELLCMD	Holds the default list of commands which are local to the SHELL. If a rule is an invocation of one of these commands, a SHELL is automatically spawned to handle it.
\$	This macro translates to a dollar sign. Thus you can use <code>\$\$</code> in the makefile to represent a single <code>"\$"</code> .

Dynamically maintained macros

There are several dynamically maintained macros that are useful as abbreviations within rules. It is best not to define them explicitly.

Macro	Description
\$*	The basename of the current target.
\$<	The name of the current dependency file.
\$@	The name of the current target.
\$?	The names of dependents which are younger than the target.
\$!	The names of all dependents.

The `$<` and `$*` macros are normally used for implicit rules. They may be unreliable when used within explicit target command lines. All macros may be suffixed with **F** to specify the Filename components (e.g. `${*F}`, `${@F}`). Likewise, the macros `$*`, `$<` and `$@` may be suffixed by **D** to specify the Directory component.

The result of the `$*` macro is always without double quotes (`"`), regardless of the original target having double quotes (`"`) around it or not.

The result of using the suffix **F** (Filename component) or **D** (Directory component) is also always without double quotes (`"`), regardless of the original contents having double quotes (`"`) around it or not.

Makefile: Functions

A function not only expands but also performs a certain operation. Functions syntactically look like macros but have embedded spaces in the macro name, e.g. `$(match arg1 arg2 arg3)`. All functions are built-in and currently there are five of them: `match`, `separate`, `protect`, `exist` and `nexist`.

match

The `match` function yields all arguments which match a certain suffix:

```
$(match .obj prog.obj sub.obj mylib.lib)
```

yields:

```
prog.obj sub.obj
```

separate

The `separate` function concatenates its arguments using the first argument as the separator. If the first argument is enclosed in double quotes then `\n` is interpreted as a newline character, `\t` is interpreted as a tab, `\ooo` is interpreted as an octal value (where, `ooo` is one to three octal digits), and spaces are taken literally. For example:

```
$(separate "\n" prog.obj sub.obj)
```

results in:

```
prog.obj
sub.obj
```

Function arguments may be macros or functions themselves. So,

```
$(separate "\n" $(match .obj $!))
```

yields all object files the current target depends on, separated by a newline string.

protect

The `protect` function adds one level of quoting. This function has one argument which can contain white space. If the argument contains any white space, single quotes, double quotes, or backslashes, it is enclosed in double quotes. In addition, any double quote or backslash is escaped with a backslash.

Example:

```
echo $(protect I'll show you the "protect" function)
```

yields:

```
echo "I'll show you the \"protect\" function"
```

exist

The `exist` function expands to its second argument if the first argument is an existing file or directory.

Example:

```
$(exist test.c ccmb test.c)
```

When the file `test.c` exists, it yields:

```
ccmb test.c
```

When the file `test.c` does not exist nothing is expanded.

nexist

The `nexist` function is the opposite of the `exist` function. It expands to its second argument if the first argument is not an existing file or directory.

Example:

```
$(nexist test.src ccmb test.c)
```

Conditional processing

Lines containing `ifdef`, `ifndef`, `else` or `endif` are used for conditional processing of the makefile. They are used in the following way:

```
ifdef macro-name
if-lines
else
else-lines
endif
```

The *if-lines* and *else-lines* may contain any number of lines or text of any kind, even other `ifdef`, `ifndef`, `else` and `endif` lines, or no lines at all. The `else` line may be omitted, along with the *else-lines* following it.

First the *macro-name* after the `if` command is checked for definition. If the macro is defined then the *if-lines* are interpreted and the *else-lines* are discarded (if present). Otherwise the *if-lines* are discarded; and if there is an `else` line, the *else-lines* are interpreted; but if there is no `else` line, then no lines are interpreted.

When using the `ifndef` line instead of `ifdef`, the macro is tested for not being defined. These conditional lines can be nested up to 6 levels deep.



See also [Defining Macros](#) in section 5.6, [Make Utility Options](#), in Chapter *Tools Options* of the reference manual.

Comment lines

Anything after a `"#"` is considered as a comment, and is ignored. If the `"#"` is inside a quoted string, it is not treated as a comment. Completely blank lines are ignored.

```
test.src : test.c      # this is comment and is
                      ccmb test.c # ignored by the make utility
```

Include lines

An *include* line is used to include the text of another makefile (like including a `.h` file in a C source). Macros in the name of the included file are expanded before the file is included. Include files may be nested.

```
include makefile2
```

Export lines

An *export* line is used to export a macro definition to the environment of any command executed by the make utility.

```
GREETING = Hello
export GREETING
```

This example creates the environment variable `GREETING` with the value `Hello`. The macros is exported at the moment the `export` line is read so the macro definition has to proceed the `export` line.

7.4 Librarian

The librarian **tlb** is a program to build and maintain your own library files. A library file is a file with extension **.lib** and contains one or more object files (**.obj**) that may be used by the linker.

The librarian has five main functionalities:

- Deleting an object module from the library
- Moving an object module to another position in the library file
- Replacing an object module in the library or add a new object module
- Showing a table of contents of the library file
- Extracting an object module from the library

The librarian takes the following files for input and output:

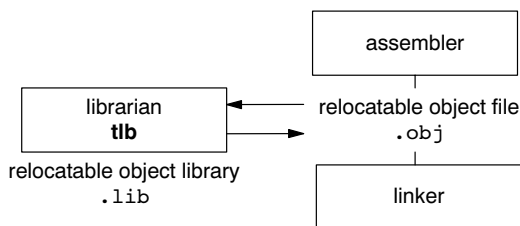


Figure 7-1: Librarian

The linker optionally includes object modules from a library if that module resolves an external symbol definition in one of the modules that are read before.

7.4.1 Calling the Librarian

You can only call the librarian from the command line. The invocation syntax is:

```
tlb key_option [sub_option...] library [object_file]
```

- key_option** With a key option you specify the main task which the librarian should perform. You must *always* specify a key option.
- sub_option** Sub-options specify into more detail how the librarian should perform the task that is specified with the key option. It is not obligatory to specify sub-options.
- library** The name of the library file on which the librarian performs the specified action. You must always specify a library name, except for the option **-?** and **-V**. When the library is not in the current directory, specify the complete path (either absolute or relative) to the library.
- object_file** The name of an object file. You must always specify an object file name when you add, extract, replace or remove an object file from the library.

7.4.2 Overview of Librarian Options

The following librarian options are available:

Description	Option	Sub-option
Main functions (key options)		
Replace or add an object module	-r	-a -b -c -u -v
Extract an object module from the library	-x	-v
Delete object module from library	-d	-v
Move object module to another position	-m	-a -b -v
Print a table of contents of the library	-t	-s0 -s1
Print object module to standard output	-p	
Sub-options		
Append or move new modules after existing module <i>name</i>	-a name	

Description	Option	Sub-option
Append or move new modules before existing module <i>name</i>	-b name	
Create library without notification if library does not exist	-c	
Preserve last-modified date from the library	-o	
Print symbols in library modules	-s{0 1}	
Replace only newer modules	-u	
Verbose	-v	
Miscellaneous		
Display options	-?	
Display version header	-V	
Read options from <i>file</i>	-f file	
Suppress warnings above level <i>n</i>	-wn	

Table 7-3: Overview of librarian options and sub-options



For a complete list and description of all librarian options, see section 5.7, [Librarian Options](#), in Chapter *Tool Options* of the reference manual.

7.4.3 Examples

Create a new library

If you add modules to a library that does not yet exist, the library is created. To create a new library with the name `mylib.lib` and add the object modules `cstart.obj` and `calc.obj` to it:

```
tlb -r mylib.lib cstart.obj calc.obj
```

Add a new module to an existing library

If you add a new module to an existing library, the module is added at the end of the module. (If the module already exists in the library, it is replaced.)

```
tlb -r mylib.lib mod3.obj
```

Print a list of object modules in the library

To inspect the contents of the library:

```
tlb -t mylib.lib
```

The library has the following contents:

```
cstart.obj
calc.obj
mod3.obj
```

Move an object module to another position

To move `mod3.obj` to the beginning of the library, position it just before `cstart.obj`:

```
tlb -mb cstart.obj mylib.lib mod3.obj
```

Delete an object module from the library

To delete the object module `cstart.obj` from the library `mylib.lib`:

```
tlb -d mylib.lib cstart.obj
```

Extract all modules from the library

Extract all modules from the library `mylib.lib`:

```
tlb -x mylib.lib
```

Index

A

Absolute object file, [6-2](#)
 Address, [6-2](#)
 Address spaces, [6-14](#)
 Architecture, [6-2](#)
 Architecture definition, [6-12](#), [6-14](#)
 Assembler, [5-1](#)
 error messages, [5-6](#)
 invocation, [5-2](#)
 optimizations, [5-5](#)
 setting options, [5-2](#)
 Assembly process, [5-1](#)

B

Backend
 compiler phase, [2-2](#)
 optimization, [2-2](#)
 Board specification, [6-13](#)
 Breakpoints, [1-8](#)
 Building an Embedded Application, [1-7](#)
 Bus, [6-16](#)
 Bus definition, [6-13](#)

C

C compiler settings, [1-7](#)
 C preprocessor, [6-12](#)
 C programming, [1-1](#)
 C source files
 Adding a new source file to a project, [1-4](#)
 Adding existing files to a project, [1-5](#)
 C++ compiler
 error messages, [3-5](#)
 invocation, [3-1](#)
 setting options, [3-2](#)
 CERT C, [2-12](#)
 priority and levels, [2-12](#)
 ChromaCoding, [6-12](#)
 Coalescer, [2-8](#)
 Code checking
 CERT C, [2-12](#)
 MISRA-C, [2-13](#)
 Code generator, [2-2](#)
 Code instrumentation, [4-2](#)
 Code modification, [6-3](#)
 Common subexpression elimination, [2-7](#)
 Compaction, [2-8](#)
 Compilation process, [2-1](#)
 Compiler
 error messages, [2-14](#)
 invocation, [2-2](#)
 optimizations, [2-6](#)
 setting options, [2-3](#)
 Compiler phases
 backend, [2-1](#)
 code generator phase, [2-2](#)
 optimization phase, [2-2](#)

peephole optimizer phase, [2-2](#)
 pipeline scheduler, [2-2](#)
 frontend, [2-1](#)
 optimization phase, [2-2](#)
 parser phase, [2-2](#)
 preprocessor phase, [2-1](#)
 scanner phase, [2-1](#)

Compiling a single source file, [1-7](#)
 Compiling for debugging, [2-6](#)
 Compress ROM image, [6-11](#)
 Conditional jump reversal, [2-8](#)
 Constant propagation, [2-7](#)
 Control flow simplification, [2-8](#)
 Control program, [7-2](#)
 invocation, [7-2](#)
 options (overview), [7-3](#)
 Controlling the linker, [6-3](#)
 Copy table, [6-2](#)
 compression, [6-11](#)
 Core, [6-2](#), [6-16](#)
 CSE, [2-7](#)

D

Dead code elimination, [2-8](#)
 Debug information, [2-6](#)
 Debugging, [2-6](#)
 Debugging an Embedded Application, [1-8](#)
 Evaluating expressions, [1-8](#)
 Setting breakpoints, [1-8](#)
 Viewing memory, [1-9](#)
 Viewing output, [1-9](#)
 Watching expressions, [1-8](#)
 Delete duplicate code sections, [6-11](#)
 Delete duplicate constant data, [6-11](#)
 Delete unreferenced sections, [6-11](#)
 Derivative, [6-2](#)
 Derivative definition, [6-12](#), [6-16](#)
 Device selection, [1-5](#)

E

ELF/DWARF 2 format, [6-3](#)
 Embedded Applications
 Building, [1-7](#)
 Debugging, [1-8](#)
 Rebuilding, [1-7](#)
 Embedded programming, [1-1](#)
 Embedded Project Options, [1-5](#)
 Tool options, [1-6](#)
 Embedded projects, [1-1](#)
 Adding a new source file, [1-4](#)
 Adding existing files, [1-5](#)
 Creating, [1-4](#)
 Setting options, [1-5](#)
 Embedded Software, Getting started, [1-1](#)
 Embedded Software Tools, [1-1](#)
 Embedded tool options, [1-6](#)

Error messages

- assembler*, 5-6
- C++ compiler*, 3-5
- compiler*, 2-14
- linker*, 6-22

Expression simplification, 2-7

F

File extensions, 1-3

First fit decreasing, 6-11

Flow simplification, 2-8

Forward store, 2-8

Frontend

- compiler phase*, 2-1
- optimization*, 2-2

G

Generic assembly optimizations, 2-8

I

Include files

- default directory*, 2-6, 3-4, 5-4, 6-8
- search order*, 2-5, 3-4, 5-4

Incremental linking, 6-9

Inlining functions, 2-7

Instruction scheduler, 2-8

Intel-Hex format, 6-3

Interprocedural register optimization, 2-8

J

Jump chaining, 2-8

L

Labels, linker, 6-20

Librarian, 6-9, 7-13

- invocation*, 7-13
- options (overview)*, 7-13

Libraries

- extracting objects*, 6-9
- linking*, 6-7
- order on command line*, 6-8
- search order*, 6-8
- system*, 6-7
- user*, 6-8

Library, 6-2

Library maintainer, 7-13

Linker

- controlling from within Altium Designer*, 6-12
- controlling with a script*, 6-11
- error messages*, 6-22
- invocation*, 6-4
- labels*, 6-20
- optimizations*, 6-10

Linker output formats

- ELF/DWARF 2 format*, 6-3
- Intel-Hex format*, 6-3
- Motorola S-record format*, 6-3

Linker script file, 6-3

- architecture definition*, 6-12, 6-14
- board specification*, 6-13
- bus definition*, 6-13
- derivative definition*, 6-12, 6-16
- memory definition*, 6-13, 6-17
- processor definition*, 6-13, 6-17
- section layout definition*, 6-13, 6-18
- structure*, 6-12

Linker script language (LSL), 6-3, 6-11

- internal memory*, 6-16
- on-chip memory*, 6-16

Linking process, 6-1

- incremental linking*, 6-9
- linking*, 6-2
- locating*, 6-3
- optimizations*, 6-10

List file, generating, 5-5

Locating, 6-3

Logical address, 6-2

Loop transformations, 2-8

LSL, 6-11

LSL file, 6-2

M

Make utility, 7-5

- .DEFAULT target*, 7-8
- .DONE target*, 7-8
- .IGNORE target*, 7-8
- .INIT target*, 7-8
- .PRECIOUS target*, 7-8
- .SILENT target*, 7-8
- .SUFFIXES target*, 7-8
- comment lines*, 7-12
- conditional processing*, 7-12
- dependency*, 7-7
- drive letters*, 7-8
- else*, 7-12
- endif*, 7-12
- exist function*, 7-11
- export lines*, 7-12
- functions*, 7-11
- ifdef*, 7-12
- ifndef*, 7-12
- implicit rules*, 7-9
- include lines*, 7-12
- invocation*, 7-6
- macro definition*, 7-6
- macro definitions*, 7-10
- macro MAKE*, 7-10
- macro MAKEFLAGS*, 7-10
- macro PRODDIR*, 7-10
- macro SHELLCMD*, 7-10
- makefile*, 7-5, 7-7
- match function*, 7-11
- nexist function*, 7-12
- options (overview)*, 7-6
- predefined macros*, 7-10

protect function, 7-11
rules in makefile, 7-8
separate function, 7-11
special targets, 7-8
 Makefile, 7-5
 writing, 7-7
 Map file, 6-22
 MAU, 6-2
 Memory, 6-16
 Memory definition, 6-13, 6-17
 Memory viewing, 1-9
 MISRA-C, 2-13
 Motorola S-record format, 6-3

O

Object code, 6-2
 Optimizations, size/speed trade-off, 2-9
 Optimizations
 assembler, 5-5
 allow generic instructions, 5-5
 jump chains, 5-5
 optimize instruction size, 5-5
 backend, 2-2
 coalescer, 2-8
 compaction, 2-8
 compiler, 2-6
 common subexpression elimination, 2-7
 compress ROM image, 6-11
 conditional jump reversal, 2-8
 constant propagation, 2-7
 control flow simplification, 2-8
 copy table compression, 6-11
 dead code elimination, 2-8
 delete duplicate code sections, 6-11
 delete duplicate constant data, 6-11
 delete unreferenced sections, 6-11
 expression simplification, 2-7
 first fit decreasing, 6-11
 flow simplification, 2-8
 forward store, 2-8
 frontend, 2-2
 generic assembly optimizations, 2-8
 inlining functions, 2-7
 instruction scheduler, 2-8
 interprocedural register optimization, 2-8
 jump chaining, 2-8
 linker, 6-10
 loop transformations, 2-8
 peephole optimizations, 2-8
 reduce size of code sections, 6-11
 reverse inlining, 2-8
 subscript strength reduction, 2-8
 switch optimization, 2-8
 Output formats. See *Linker output formats*
 Output of application, 1-9

P

Parser, 2-2

Peephole optimization, 2-2, 2-8
 Physical address, 6-2
 Pipeline scheduler, 2-2
 Processor, 6-2
 class, 2-2, 3-2, 5-2
 selecting a core, 2-3, 3-2, 5-2
 Processor definition, 6-13, 6-17
 Processors
 Selecting a device, 1-5
 Setting a target processor, 1-5
 Profiling, 4-1
 call graph incorrect, 4-4
 code instrumentation, 4-2
 heap too small, 4-4
 Project, Embedded, 1-4
 Projects, Embedded projects, 1-1

Q

Quality assurance report, 2-14

R

Reduce size of code sections, 6-11
 Register allocator, 2-2
 Relocatable object file, 6-1, 6-2
 debug information, 6-3
 header information, 6-2
 object code, 6-2
 relocation information, 6-3
 symbols, 6-2
 Relocation, 6-2
 Relocation expressions, 6-3
 Relocation information, 6-2
 Resolving symbols, 6-9
 Reverse inlining, 2-8
 ROM image, 6-11

S

SCA, 2-11
 Scanner, 2-1
 Section, 6-2
 Section attributes, 6-2
 Section layout definition, 6-13, 6-18
 Sections, locating, 6-18
 Setting, Breakpoints, 1-8
 Space names, 6-14
 Startup code, 6-9
 Static code analysis, 2-11
 Subscript strength reduction, 2-8
 Switch optimization, 2-8

T

Target, 6-2
 Target processors in embedded projects, 1-5
 TASKING tools, 1-1

U

Unresolved reference, 6-2

Utilities

control program, [7-2](#)

librarian, [7-13](#)

make utility, [7-5](#)

V

Verbose option, linker, [6-9](#)